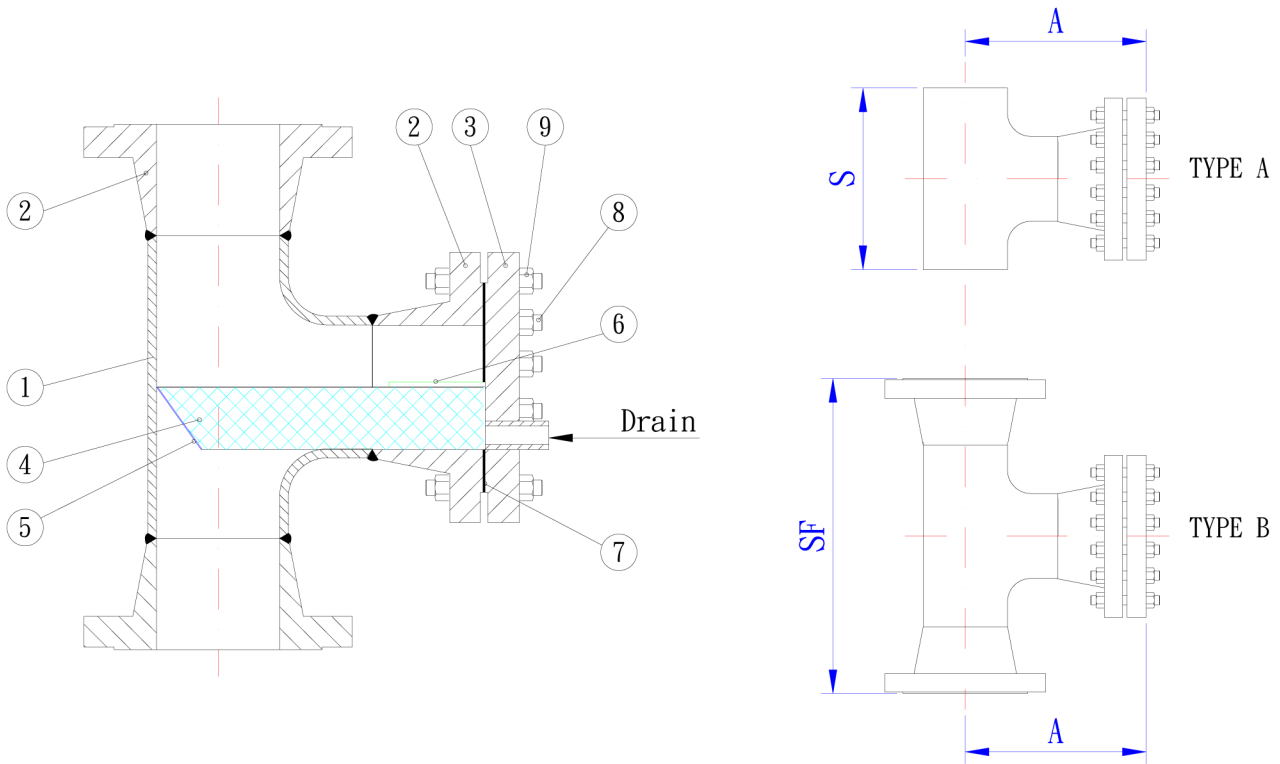


Fabricated " Bath Tub" (T-Type)Strainer

MODEL: TB ANSI Class: 150/300/600/900LB



SIZE (inches)	S	SF				A				POS.	DESCRIPTION	STD. MATERIALS
		150	300	600	900	150	300	600	900			
2"	127	254	268	286	343	148	158	177	219	1	Body	ASTM A234WPB
3"	172	312	332	351	389	182	197	216	242	2	Flange	ASTM A105
4"	210	363	382	427	453	208	225	260	279	3	Blind flange	ASTM A105
6"	286	464	483	535	579	260	281	324	353	4	Basket	S. S. 304
8"	356	560	579	636	694	311	333	382	419	5	Frame	S. S. 304
10"	432	636	668	750	813	351	385	447	485	6	Guide rods	CARBON STEEL
12"	508	737	769	833	922	403	438	492	549	7	Gasket	Spiral wound 304SS non asbestos fill O-ring CB
16"	610	864	903	979	1056	472	511	574	626	8	Bolts	ASTM A190-B7
18"	686	966	1004	1067	1157	525	565	624	689	9	Nuts	ASTM A194-2H
20"	762	1052	1086	1156	1271	571	609	676	752	Fabricated to satisfy any filtration requirements and provide a very high filtering area, therefore ensuring a very low pressure drop.		
24"	864	1169	1201	1284	1462	635	673	753	879	TEE DIMENSIONS: Acc. to ANSI B16.9		
Dimensions: S, SF, A are in millimeters [mm]										BUTT WELD ENDS: Acc. to ANSI B16.25		
										FLANGED ENDS: Acc. to ANSI B16.5		
										SPECIAL MATERIALS ON REQUEST.		



Exclusive distributor

ph: (+61 3) 9764 1149

web: www.razvalve.com

