

“TY” TYPE STRAINER

MODEL: TY150

ANSI CL: 150 LB Q`ty: 2PCS

NPS (IN)	SCH NO.	A			L			B	W	D	ROD X ψ	N O	PARTS	MATERIALS
		150#	300#	600#	150#	300#	600#							
2	STD	127	133	143	172	178	188	64	49.2	25.4	6.4	1	TEE	ASTM A234WP304
3	STD	156	165	175	223	232	242	86	74.6	38.1	6.4	2	Flange	ASTM 304SS
4	STD	181	191	213	267	277	299	105	98.4	50.8	6.4	3	Blind Flange	ASTM 304SS
6	STD	232	241	267	356	365	391	143	150.8	76.2	9.5	4	Bolts	ASTM A193-B8
8	STD	280	289	316	438	448	477	178	198.4	100.0	9.5	5	Nuts	ASTM A194-8
10	STD	318	334	375	515	530	572	216	250.8	127.0	9.5	6	Gasket	CAF
12	STD	368	384	416	603	619	651	254	301.6	151.6	9.5	7	Screen	S.S. 304
14	STD	406	422	451	666	682	711	279	333.4	167.5	12.7	8	Stop Rod.(X ϕ)	S.S. 304
16	STD	432	451	489	718	737	775	305	384.2	192.9	12.7	9	Support rod. (X ϕ)	S.S. 304
18	STD	483	502	533	807	826	857	343	435.0	218.3	12.7			
20	STD	525	543	578	887	905	940	381	485.8	243.7	12.7			

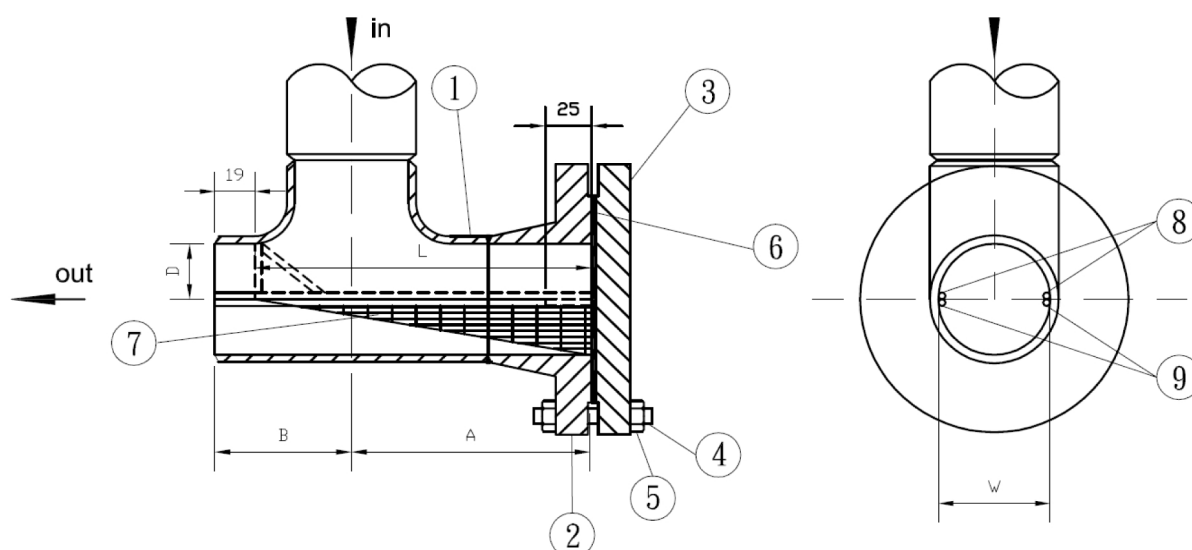
Mesh Size: 50

OPTIONS: 100%RT, PWHT

This is achieved by tapering the element to make a wide fluid path adjacent to the downstream outlet where rate of flow is large, and make a narrow path for fluid which flows in the opposite direction and exits via the outlet at which flow rate is small.

Thus, optimum use is made of the downstream side of the casing.

Also pressure losses are smaller and the filtering cycle is larger.



Exclusive distributor

ph: (+61 3) 9764 1149

web: www.razvalve.com

