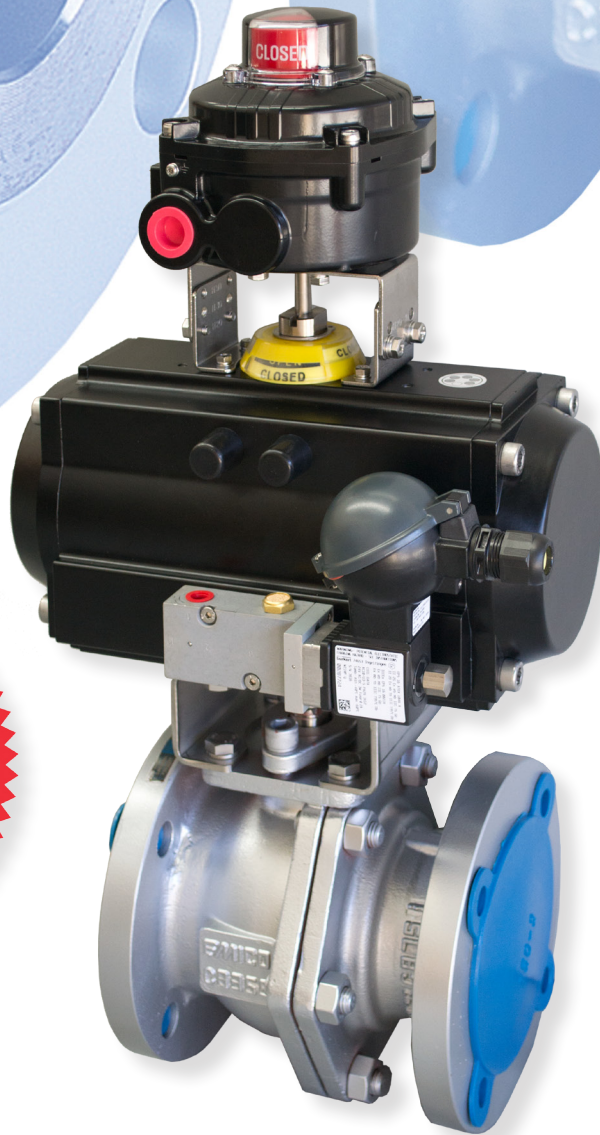
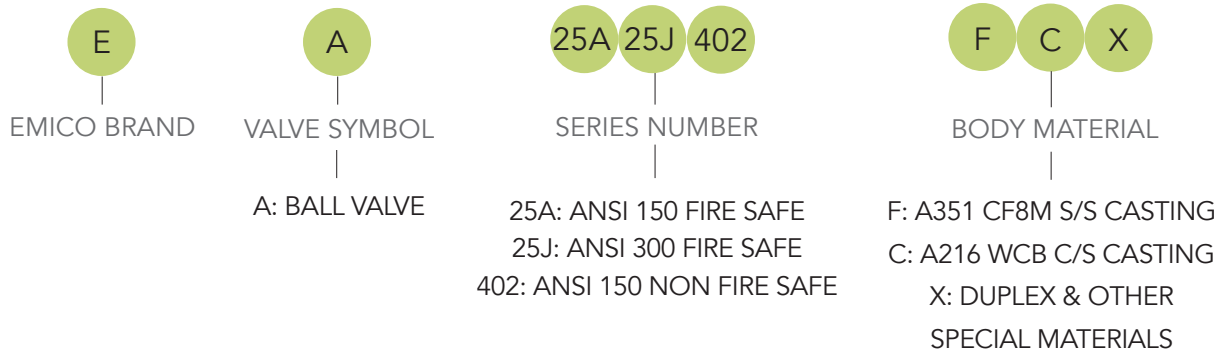


EMICO

EA-25A & EA-25J CLASS 150 & 300 FULL PORT BALL VALVES

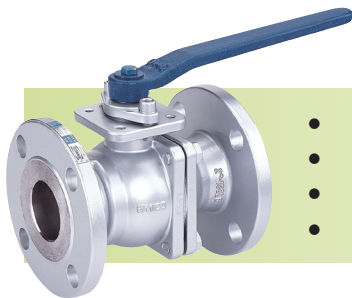


AGA - APPROVED MANUAL & AUTOMATIC



APPLICATIONS

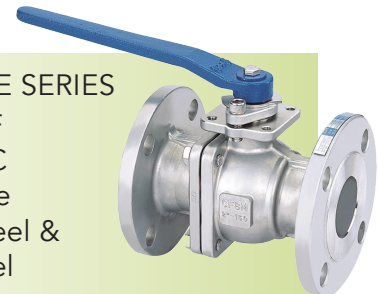
EMICO Flanged ball valves comply with API & ASME / ANSI standards and are suitable for oil & petroleum, LP Gas, petrochemical processing, pulp & paper, general industry. The valves are suitable for handling a variety of fluids in corrosive and non-corrosive applications in oil, petrochemical, chemical, gas, paper, and general processing.



- Full Bore
- Range: 15mm - 200mm
- Locking Device: Standard
- Anti - static
- ANSI Class 150 & Class 300
- ISO 5211 Mounting Pad
- API 608



- FIRE SAFE SERIES**
- Fig. EA25AF / JF
 - Fig. EA25AC / JC
 - Fire-Safe Certified
 - Stainless Steel & Carbon Steel

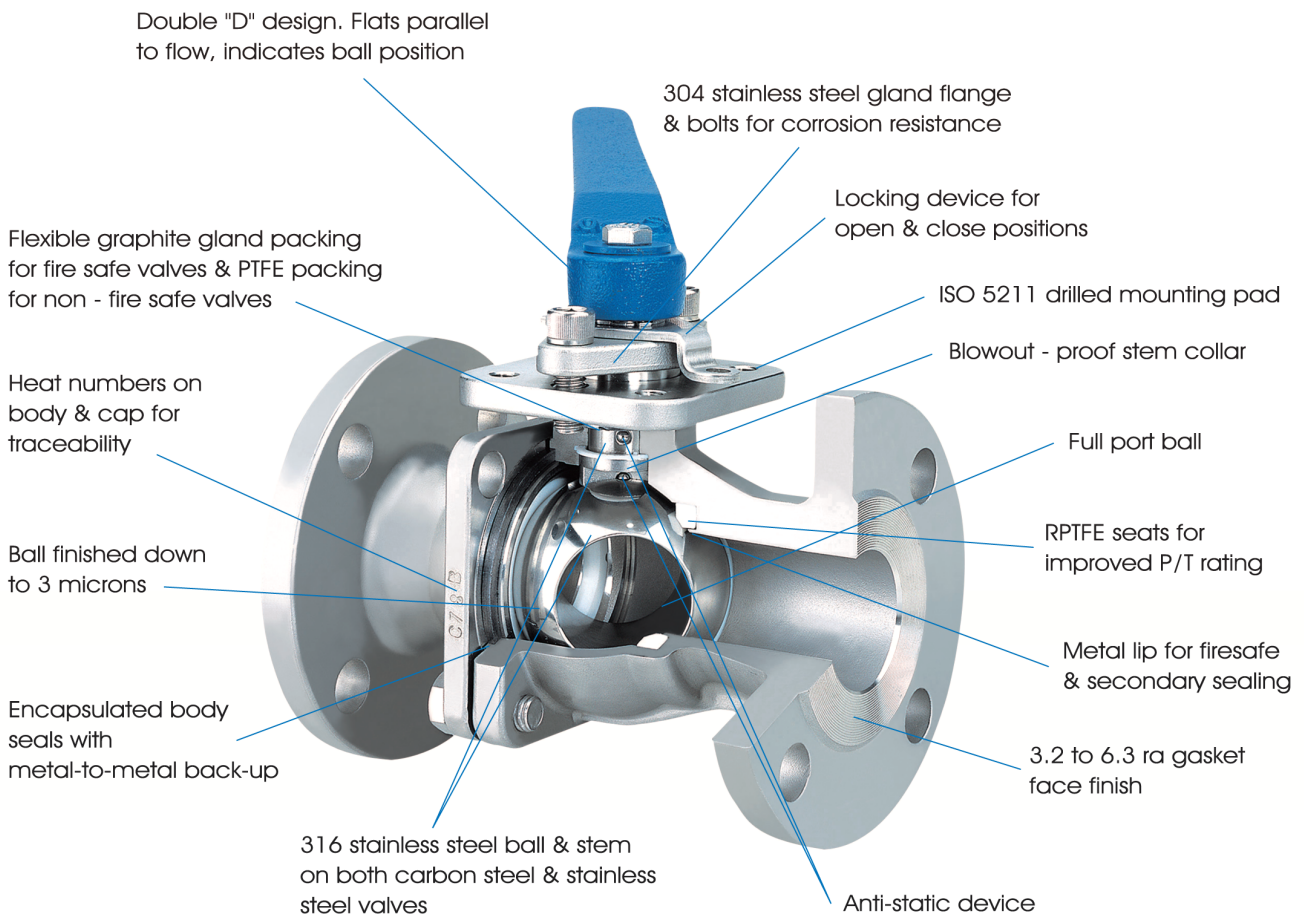


- NON-FIRE SAFE SERIES**
- Fig. EA402F
 - Fig. EA402C
 - Non-Firesafe
 - Stainless Steel & Carbon Steel

EMICO Flanged Ball Valve Main Technical Specifications	EA-25A Class 150 Full Bore	EA-25J Class 300 Full Bore
Wall thickness in accordance with B16.34	Yes	Yes
Wall thickness in accordance with API 6D	Yes	Yes
Heavy duty bolt/nut in accordance with B16.34	Yes	Yes
Heavy duty bolt/nut in accordance with API 6D	Yes	Yes
Flange thickness in accordance with B16.5	Yes	Yes
Solid ball	Yes	Yes

Name Plate Details

 ISO-9001	FIG SIZE CLASS		BODY TRIM SEAT		F. S. P/T MF' D	



Cross-section of a typical EMICO full port, split body ball valve displaying basic design

DESIGN

WALL THICKNESS:

BODY:

TEST, SHELL & SEAT:

SEALING:

WORKING PRESSURE:

FIRE SAFE TEST:

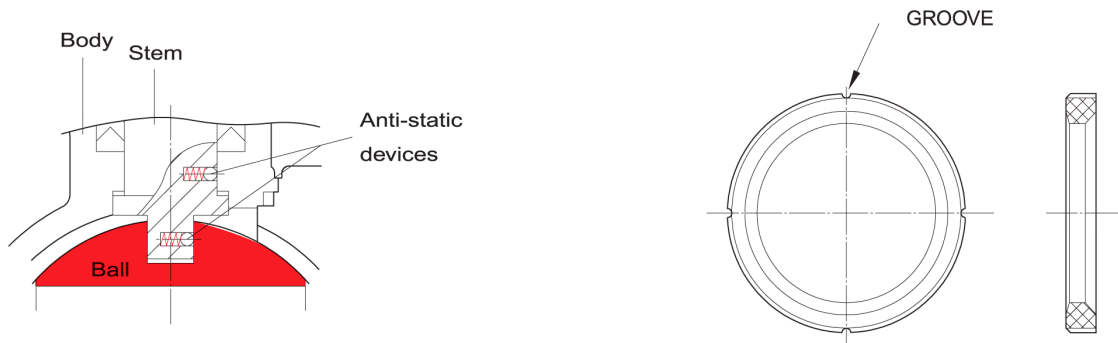
TEMPERATURE RANGE:

AGA APPROVALS:



- ASME B16.34, API608
- Castings
- API 598
- Bubble-tight bi-directional
- ASME Class 150 & Class 300
- API 607 Edition 5 & 7
- Tested and Certified
- 29° to 232°C
- (i) Manual Shut-off Class 1
AS 4617 - 2004 (Incl. Amd1 & 2) -
Certificate No. 8591
- (ii) Automatic Shut-off Valve & Vent Valve Class 1
AS 4629 - 2005 (Incl. Amd1 & 2) -
Certificate No. 8590

Quality manufactured & tested under Quality Assurance systems ISO 9001 & 9002



FEATURES

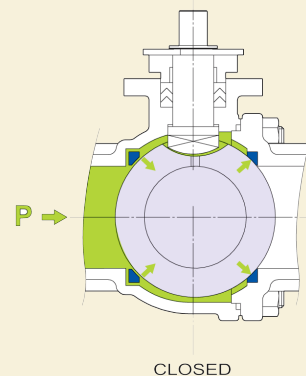
- **Anti-Static Plunger:** Positive earthing of ball and stem to valve body, preventing static electricity build-up.
- **Blowout-Proof Stem:** Internally fitted back-seated stem prevents anti-blowout under pressure and also functions as the backseat for stem sealing.
- **Locking Device:** Locks valve in open and closed positions to prevent accidental valve operation.
- **Double "D" Stem Design:** Ensures lever can only be fitted in line with flow direction for positive open / closed indication.
- **ISO 5211 Actuator Mount:** Integral actuator mounting pad as standard for all modern pneumatic and electric actuators.
- **Bolted Gland Flange:** Actuators can be fitted to the valve without disturbing the gland.
- **316SS Corrosion Resistant Trim:** For longer valve life.
- **Encapsulated Body / Cap Gasket:** Eliminates seal extrusion.
- **15% Glass Fibre Reinforced PTFE:** For higher pressure / temperature rating. Other seat materials are optionally available including Pure PTFE & Carbon-Filled PTFE.
- **Pressure Equalising Grooves:** Ensure efficient sealing at all pressures.

Velocity increases just before valve closure and when the ball is cracked off its seat. At these points, the seats are only partially supported by the ball.

The equalising grooves prevent seat damage from increased line velocity around the unsupported section of the seats. They reduce damage from cold flow (where seats are damaged by extrusion around the ball - a weakness of PTFE under pressure).

Pressure equalising grooves ensure that the upstream seat is free floating. Force acting on the downstream seat is limited to pressure exerted on the surface of the ball only and not the ball plus the upstream seat surfaces combined (piston effect). See sketch of EA25A below.

Advantage of this feature is lower valve break torque and seat wear.



FEATURES

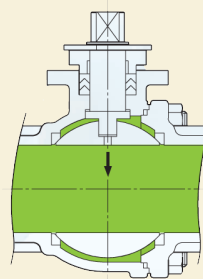
- **Split Body Design:** For easy dismantling and repair.
- **Testing:** All valves have 100% seating and body test.
- **Identification:** Every Body & Cap is Heat Numbered, fully certified and traceable, Month & Year of manufacture on name plate tag.
- **Stock:** Repair Kits comprising seats, body seal, gland packing, thrust washer & stem bearing.

CAVITY PRESSURE RELIEF HOLES:

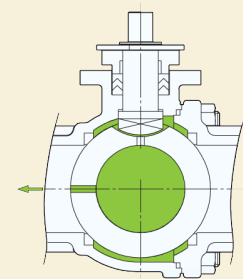
Heating of volatile fluid trapped in the body cavity can cause pressure build-up, permanently distorting the seats or the ball unless properly relieved with cavity pressure relief holes.

Valve Open (standard): With the valve in the open position, pressure equalisation between the body cavity and the line is achieved by a hole in the ball beneath the stem slot. This is standard on all EMICO ball valves (See sketch below).

Valve Closed (optional): Internal Pressure equalising vent (hole drilled in upstream side of ball) can be supplied for certain applications e.g. ammonia, chlorine, LPG (See sketch below).



VALVE OPEN



VALVE CLOSED

DESIGN & TESTING STANDARDS & SPECIFICATIONS

Pressure / Temperature Rating:

Shell: ASME / ANSI B16.34

Shell Wall Thickness:

Valve: Valve Seat Materials (page 8)

Design:

ASME / ANSI B16.34

Face to Face:

API 608

Flange Dimensions:

ASME / ANSI B16.10

Materials:

ASME / ANSI B16.5

Marking:

ASTM

Valve Testing:

MSS SP 25

Fire Safe Testing:

API 598

NACE:

API 607 Edition 5 & 7 (ISO 10497-5: 2004)

MR0175

EMICO BALL VALVE FIRE SAFE TO API 607 ED. 5 & 7 (ISO 10497 - 5: 2004)

EMICO EA-25 ball valves have independently witnessed fire tests to API 607 Ed. 5 & 7 (ISO 10497-5: 2004). These tests were performed and witnessed by TUV Rheinland, Taiwan & MIRDC.

TYPICAL EMICO FIRE SAFE TEST CERTIFICATES

EMICO fire safe ball valves are designed & manufactured to an approved fire safe tested standard to minimise both external and internal fluid leakages in the event of a plant fire.

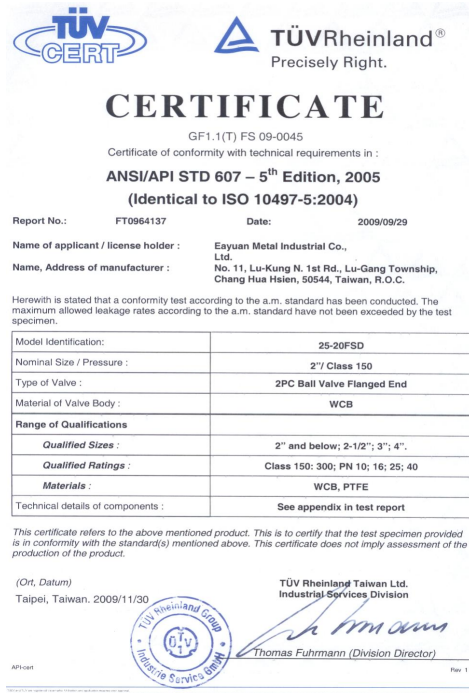


FIG. 1 - BALL/BODY CONTACT

- Contact between the ball and the fire safe lip of the body.
- Covers internal leakage.
- All fire safe valves are fitted with flexible graphite body seals and graphite stem packing.

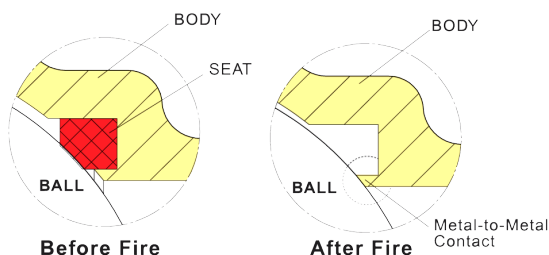
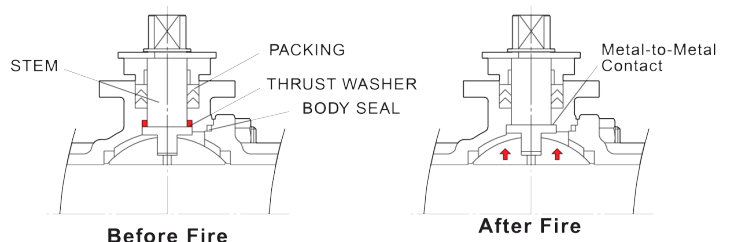


FIG. 2 - STEM/BODY CONTACT

- Contact between the stem shoulder and machined backseat of body.
- Covers external leakage.
- All fire safe valves are fitted with flexible graphite body seals and graphite stem packing.



AGA CERTIFIED PRODUCT



Certificate Holder: **EAYUAN METAL INDUSTRIAL CO LTD**
 ABN/ACN No. (if applicable): **N/A**
 Manufacturer: **Eayuan Metal Industrial Co Ltd**
 Agent (if applicable): **N/A**
 Type of Component: **Type 1 Manual Shut-off Valves**



Model No. & Description: **EMICO**
 (Refer www.aga.asn.au for more details)

Model	Sizes	Maximum working pressure	Working temperature range
EA-25A	15mm, 20mm, 25mm, 40mm, 50mm, 65mm, 80mm, 100mm, 150mm, 200mm	1960 kPa	0 °C – 60 °C
EA-25J	15mm, 20mm, 25mm, 40mm, 50mm, 65mm, 80mm, 100mm, 150mm, 200mm	4800 kPa	0 °C – 60 °C
EA-503	20mm, 25mm, 40mm, 50mm, 65mm, 80mm, 100mm, 150mm, 200mm	1960 kPa	0 °C – 60 °C
EA-507	20mm, 25mm, 40mm, 50mm, 65mm, 80mm, 100mm, 150mm, 200mm	4800 kPa	0 °C – 60 °C

Relevant Standard(s): **AS 4617 – 2004**
 (Incorporating Amendment Nos, 1 & 2)

This is to certify that the particular **COMPONENT** specifically described herein and supplied to The Australian Gas Association (hereafter called the AGA) by the Certificate Holder named above has been subject to "type-testing" and assessed by the AGA to comply with the requirements of the AGA's Product Certification Scheme for Type Tested Gas Products.

This Certificate is issued on the express conditions that:

- (i) The Certificate Holder undertakes to comply with the Rules Governing The AGA's Product Certification Scheme (hereafter called the Rules Governing);
- (ii) This Certificate remains the property of the AGA; and
- (iii) The AGA reserves the right to cancel this Certificate in accordance with the Rules Governing, and in such an event the Certificate Holder undertakes to surrender the Certificate to the AGA upon request.



[Signature]
 Client Manager

[Signature]
 Certificate Authorised

Certificate first issued: **27 June 2018** Certificate No: **8591**
 This copy valid from: **27 June 2018** Refer specification issue: **01**

QF714/11

This Certificate issued by The Australian Gas Association ABN 98 004 206 044



Certificate No:
AGA 8591 G
EA-503/EA-507
EA-25A/EA-25J



MANUAL VALVE TAG PLATE DATA

AGA CERTIFIED PRODUCT



Certificate Holder: **EAYUAN METAL INDUSTRIAL CO LTD**
 ABN/ACN No. (if applicable): **N/A**
 Manufacturer: **Eayuan Metal Industrial Co Ltd**
 Agent (if applicable): **N/A**
 Type of Component: **Class 1 Automatic Shut-off Valves and Vent Valves**



Model No. & Description: **EMICO**
 (Refer www.aga.asn.au for more details)

Model	Sizes	Maximum working pressure	Working temperature range
EA-25A	15mm, 20mm, 25mm, 40mm, 50mm, 65mm, 80mm, 100mm, 150mm, 200mm	1960 kPa	0 °C – 60 °C
EA-25J	15mm, 20mm, 25mm, 40mm, 50mm, 65mm, 80mm, 100mm, 150mm, 200mm	4800 kPa	0 °C – 60 °C
EA-503	20mm, 25mm, 40mm, 50mm, 65mm, 80mm, 100mm, 150mm, 200mm	1960 kPa	0 °C – 60 °C
EA-507	20mm, 25mm, 40mm, 50mm, 65mm, 80mm, 100mm, 150mm, 200mm	4800 kPa	0 °C – 60 °C

Solenoid options:
 - Burkert 6519 or 6518
 - Power-Genex ESV-S

Limit switch options:
 - ALS-400M2, ALS-500M2, ALS-200M2
 - Power-Genex LSB-3000

Relevant Standard(s): **AS 4629 – 2005**
 (Incorporating Amendment Nos, 1 & 2)

This is to certify that the particular **COMPONENT** specifically described herein and supplied to The Australian Gas Association (hereafter called the AGA) by the Certificate Holder named above has been subject to "type-testing" and assessed by the AGA to comply with the requirements of the AGA's Product Certification Scheme for Type Tested Gas Products.

This Certificate is issued on the express conditions that:

- (i) The Certificate Holder undertakes to comply with the Rules Governing The AGA's Product Certification Scheme (hereafter called the Rules Governing);
- (ii) This Certificate remains the property of the AGA; and
- (iii) The AGA reserves the right to cancel this Certificate in accordance with the Rules Governing, and in such an event the Certificate Holder undertakes to surrender the Certificate to the AGA upon request.



[Signature]
 Client Manager

[Signature]
 Certificate Authorised

Certificate first issued: **21 June 2018** Certificate No: **8590**
 This copy valid from: **26 June 2018** Refer specification issue: **02**

QF714/11

This Certificate issued by The Australian Gas Association ABN 98 004 206 044



Australian Standard AS 4629-2005 (Amdt. 1 & 2)
AGA Certificate No. AGA 8590 G

- Automatic Shut-Off Valves, Class 1
- Automatic Vent Valves, Class 1

Valve Model: EA- 25A 25J 503 507 C F

Flanged Ends: Class 150 Class 300

Serial No: M/Y: P/T: 1960 4800 /0-60°C

c/w Emico Actuator: EA-SR

Solenoid: 6519 6518 ESV GP Ex

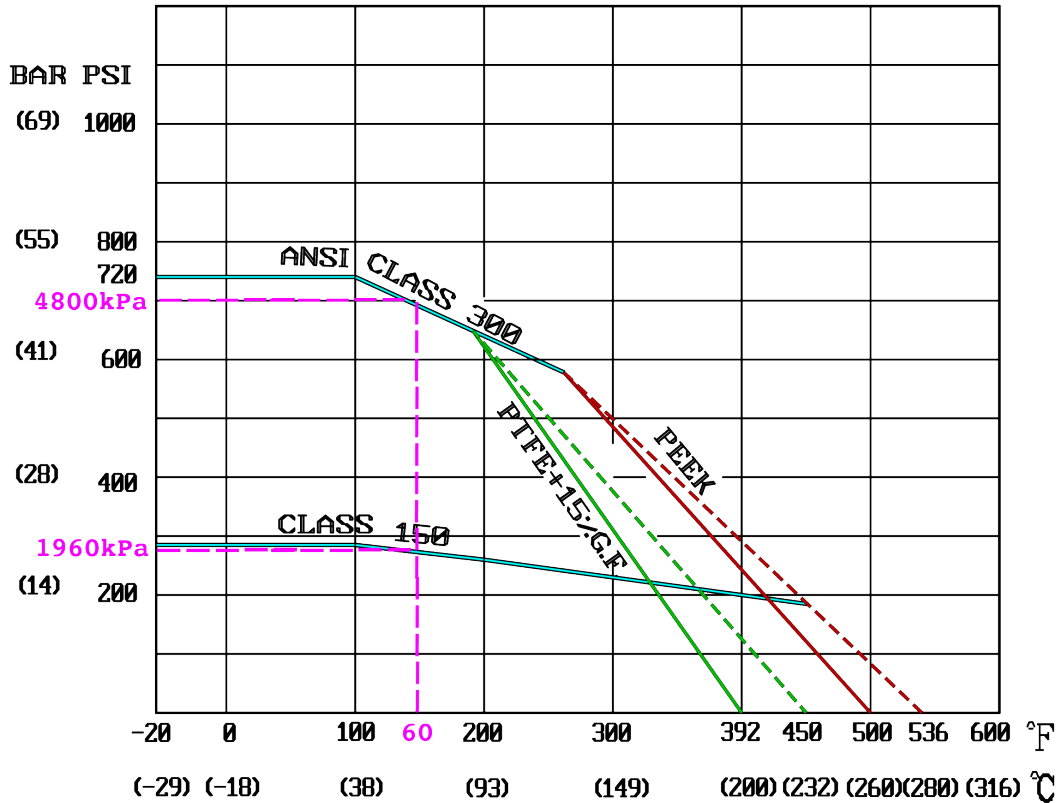
Limit Switch: ALS- 400M2 500M2 200M2 / LSB - 3000

Supplied by: **RAZVALVE PACIFIC** 03 9764 1149



AUTOMATIC SHUT-OFF AND VENT VALVE TAG PLATE DATA

PRESSURE & TEMPERATURE DETAILS



ADDITIONAL EA-25A CLASS 150 BALL VALVE DETAILS

Maximum pressure over working temperature range:
 For standard valve: 0kPa @ 232°C
 As AGA-tested valve: 1,960kPa @ 60°C

Maximum pressure over working temperature range:
 For standard valve: 38°C @ 2,000kPa
 As AGA-tested valve: 60°C @ 1,960kPa

Type of valve: Ball valve
 Class of Automatic shut-off valve: Class 1

ADDITIONAL EA-25J CLASS 300 BALL VALVE DETAILS

Maximum pressure over working temperature range:
 For standard valve: 0kPa @ 232°C
 As AGA-tested valve: 4,800kPa @ 60°C

Maximum pressure over working temperature range:
 For standard valve: 38°C @ 5,000kPa
 As AGA-tested valve: 60°C @ 4,800kPa

Type of valve: Ball valve
 Class of Automatic shut-off valve: Class 1

Solid Lines:
 Continuous Temperature

Dotted Lines:
 Intermittent/Peak
 Temperature

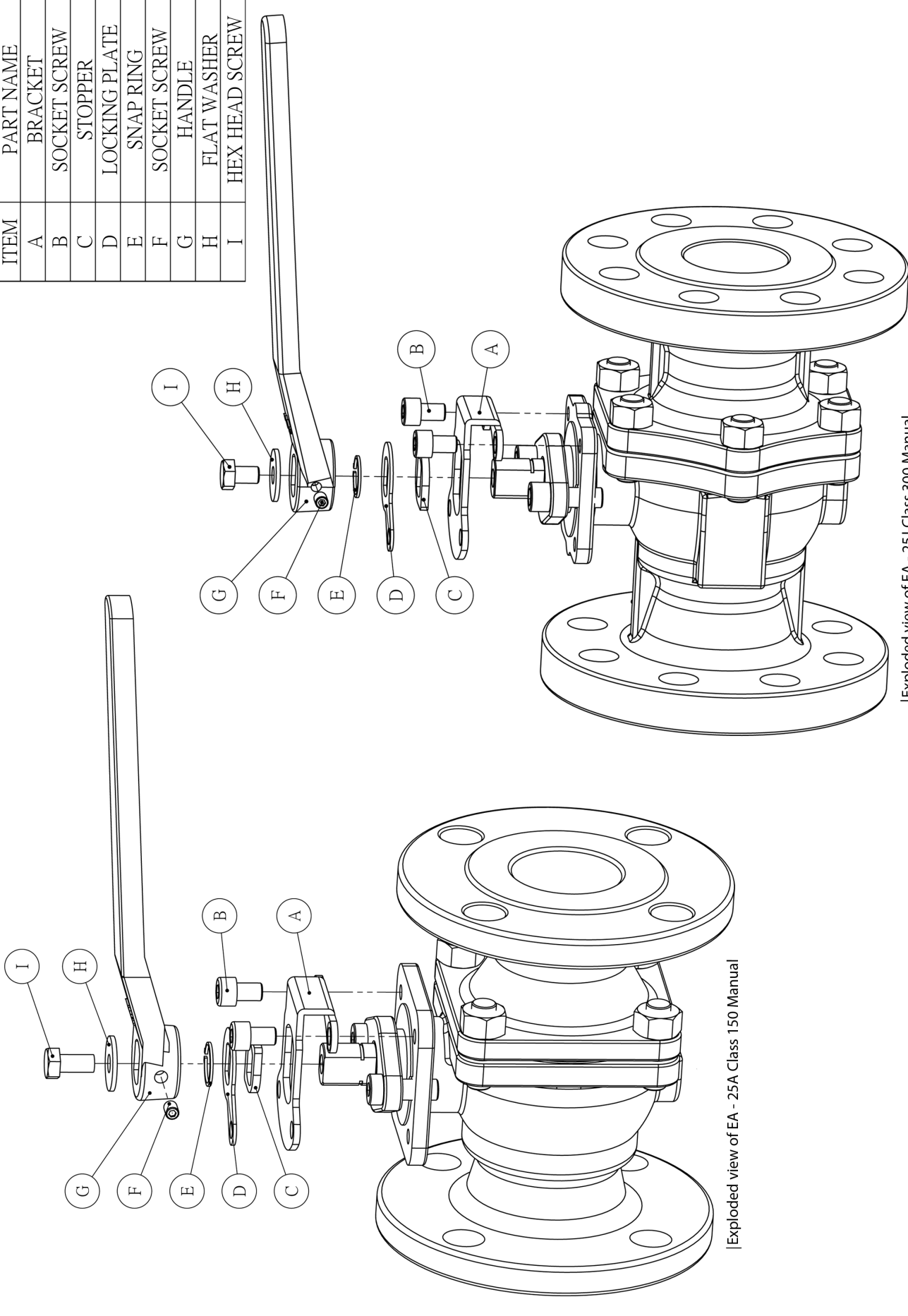
Pink-dashed Lines:
 AGA valve product
 testing

APPLICABLE FIG: EA25A
 (150LB) / EA25J
 (300LB)

1960kPa @ 60°C
 (EA-25A / Class 150)

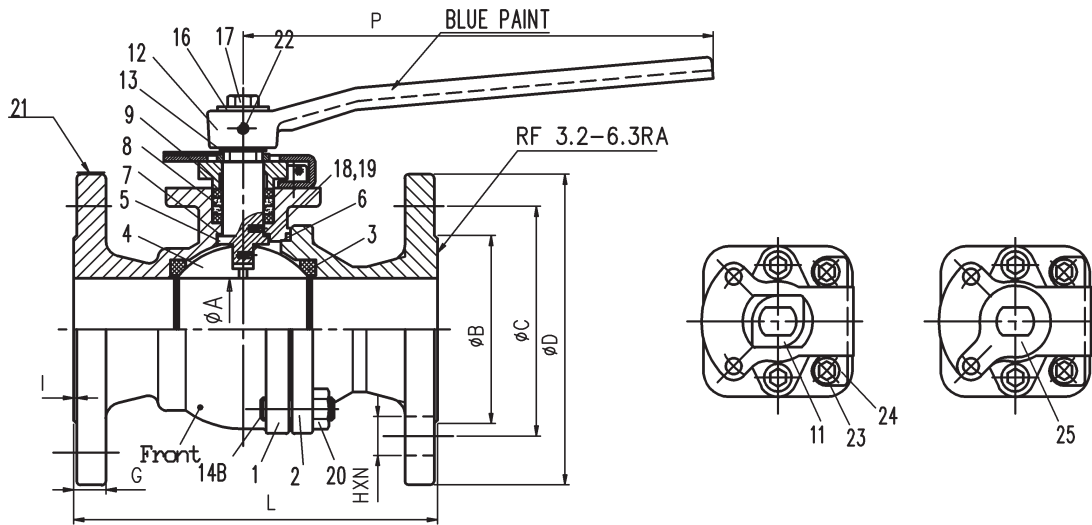
4800kPa @ 60°C
 (EA-25J / Class 300)

ITEM	PART NAME
A	BRACKET
B	SOCKET SCREW
C	STOPPER
D	LOCKING PLATE
E	SNAP RING
F	SOCKET SCREW
G	HANDLE
H	FLAT WASHER
I	HEX HEAD SCREW



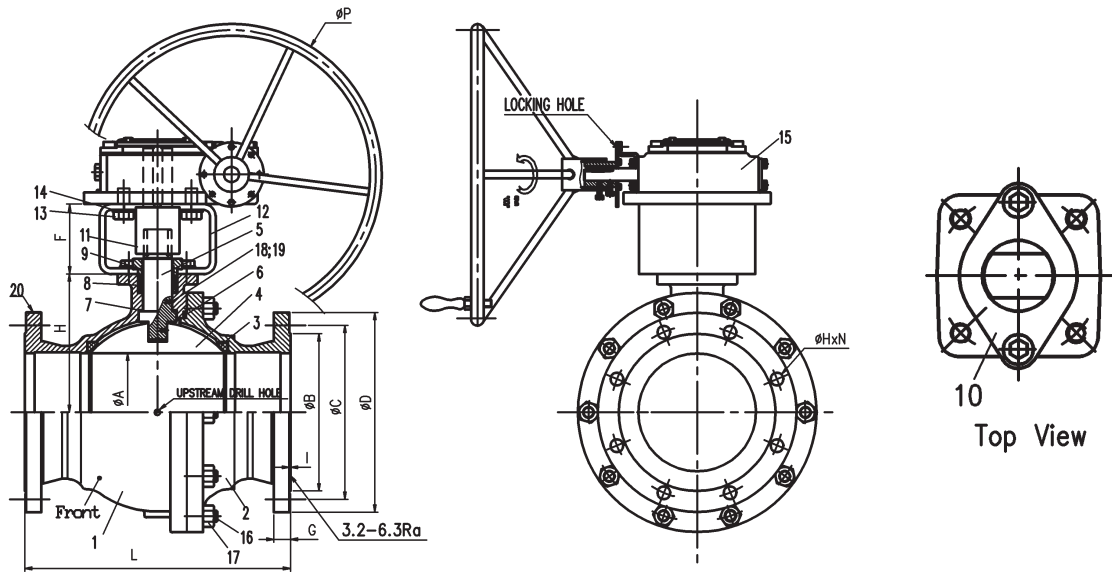
| Exploded view of EA - 25A Class 150 Manual

| Exploded view of EA - 25J Class 300 Manual



ITEM	PART NAME	MATERIAL		
1	BODY	WCB	CF8M	LCC
2	CAP	WCB	CF8M	LCC
3	SEATS	PTFE+15%G.F.		
4	BALL	CF8M		
5	STEM	316SS		
6	JOINT GASKET	GRAPHITE		
7	GASKET	PTFE		
8	SEAL	GRAPHITE		
9	GLAND BUSH	PTFE		
10	GLAND FLANGE	CF8		
11	STOPPER	304SS		
12	HANDLE	A216-WCB		
13	SNAP RING	301SS		
14	STUD	A193-B7M	A193-B8MA	A320-L7M
15	GLAND BOLTS	304SS		
16	FLAT WASHER	304SS		
17	BOLTS	304SS		
18	STATIC DEVICE	316SS		
19	SPRING	316SS		
20	NUT	A194-2HM	A194-8MA	A194-7M
21	TAG	304SS		
22	SOCKET SCREW	304SS		
23	SOCKET SCREW	304SS		
24	BRACKET	304SS		
25	LOCKING PLATE	304SS		

Material			SIZE	A	B	C	D	G	I	L	H	N	ISO5211
WCB	CF8M	LCC	1/2"	16	34.9	60.3	90	10	2	108	16	4	F05
WCB	CF8M	LCC	3/4"	20	42.9	69.9	100	10.9	2	117	16	4	F05
WCB	CF8M	LCC	1"	25	50.8	79.4	110	11.6	2	127	16	4	F05
WCB	CF8M	LCC	1-1/2"	38	73	98.4	125	14.7	2	165	16	4	F07
WCB	CF8M	LCC	2"	50	92.1	120.7	150	16.3	2	178	19	4	F07
WCB	CF8M	LCC	2-1/2"	65	104.8	139.7	180	17.9	2	190	19	4	F07
WCB	CF8M	LCC	3"	80	127	152.4	190	19.5	2	203	19	4	F10
WCB	CF8M	LCC	4"	100	157.2	190.5	230	24.3	2	229	19	8	F10

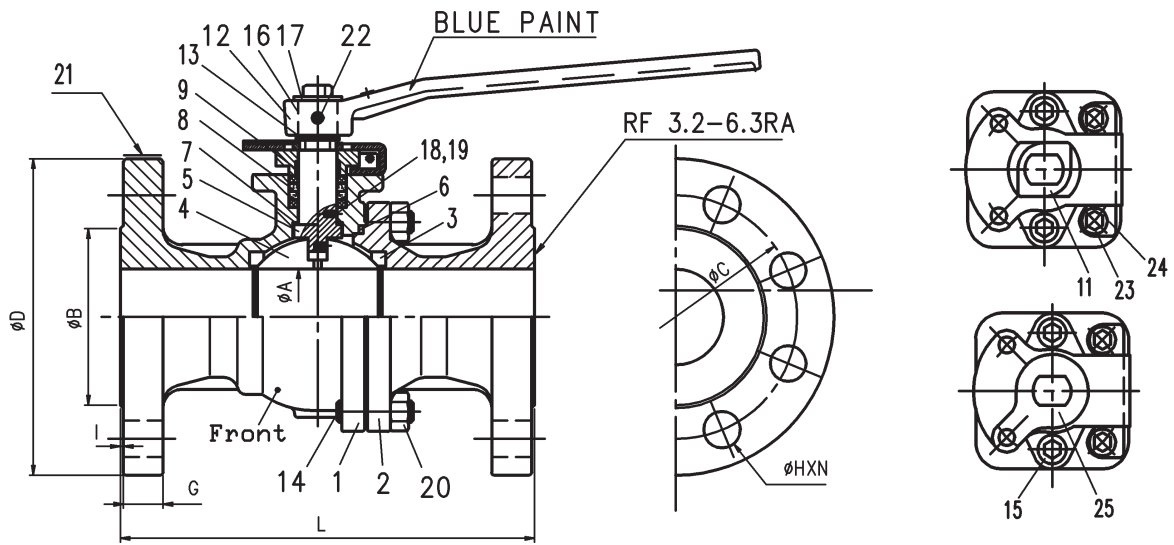


ITEM	PART NAME	MATERIAL		
1	BODY	WCB	CF8M	LCC
2	CAP	WCB	CF8M	LCC
3	SEATS	PTFE+15%G.F.		
4	BALL	A351-CF8M		
5	STEM	A276-316		
6	JOINT GASKET	GRAPHITE		
7	GASKET	PTFE		
8	SEAL	GRAPHITE		
9	GLAND BUSH	PTFE		
10	GLAND FLANGE	A351-CF8		
11	ADAPTER	AISI 1045		
12	BRACKET	AISI 1025		
13	BOLTS	AISI 1022+Zn Plated		
14	FLAT WASHER	AISI 1022+Zn Plated		
15	GEAR BOX	A216-WCB		
16	STUD	A193-B7M	A193-B8M	A320-L7M
17	NUT	A194-2HM	A194-8M	A194-7M
18	STATIC DEVICE	316SS		
19	SPRING	316SS		
20	TAG	304SS		

Material		SIZE	A	B	C±1.5	D±2	F	G	H	I±1	L	H	N	ISO5211
CF8M	WCB	6"	152	215.9	241.3	280	110	25.9	184	2.0	394	400	22	8 F12
CF8M	WCB	8"	203	269.9	298.5	345	120	29	237.5	2.0	457	500	22	8 F14

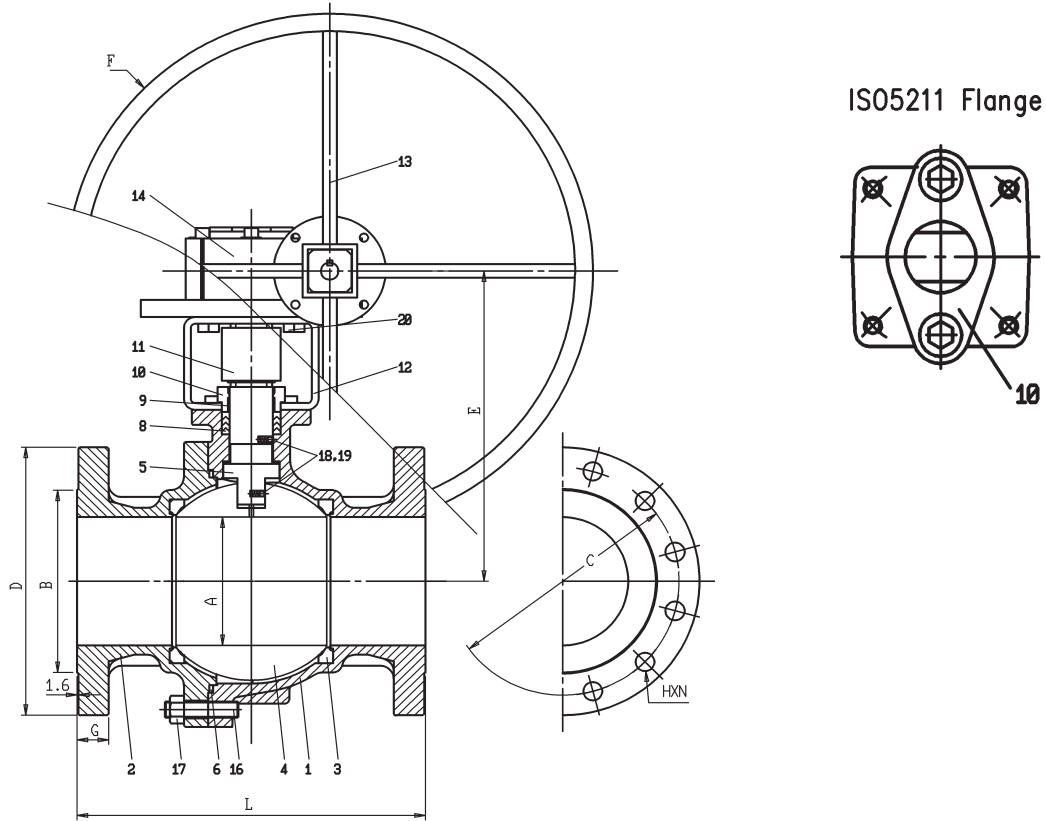
Gear Box Specification

Material		SIZE	Output(N-m)	Gear Ratio	Mechanical Advantage(±10%)
CF8M	WCB	6"	1500	58:1	15.15%
CF8M	WCB	8"	3500	56:1	18.42%



ITEM	PART NAME	MATERIAL		
1	BODY	WCB	CF8M	LCC
2	CAP	WCB	CF8M	LCC
3	SEATS	PTFE+15%G.F.		
4	BALL	CF8M		
5	STEM	SUS316/17-4PH(2"~4")		
6	JOINT GASKET	GRAPHITE		
7	GASKET	RPTFE		
8	SEAL	GRAPHITE		
9	GLAND BUSH	PTFE		
10	GLAND FLANGE	CF8		
11	STOPPER	SUS304		
12	HANDLE	WCB		
13	SNAP RING	SUS301		
14	STUD	A193-B7M	A193-B8M	A320-L7M
15	GLAND BOLTS	SUS304		
16	FLAT WASHER	SUS304		
17	BOLTS	SUS304		
18	STATIC DEVICE	SUS316		
19	SPRING	SUS316		
20	NUT	A194-2HM	A194-8M	A194-7M
21	TAG	SUS304		
22	SOCKET SCREW	SUS304		
23	SOCKET SCREW	SUS304		
24	BRACKET	SUS304		
25	LOCKING PLATE	SUS304		

SIZE	A	B	C ± 1.5	D ± 2	G	I ± 1	L	H	N	ISO5211
1/2"	16	34.9	66.7	95	12.7	2.0	140	16	4	F05
3/4"	20	42.9	82.6	115	14.3	2.0	152	19	4	F05
1"	25	50.8	88.9	125	15.9	2.0	165	19	4	F05
1-1/2"	38	73	114.3	155	19.1	2.0	190	22	4	F07
2"	50	92.1	127	165	20.7	2.0	216	19	8	F07
2-1/2"	65	104.8	149.2	190	23.9	2.0	241	22	8	F07
3"	80	127	168.3	210	27.0	2.0	282	22	8	F10
4"	100	157.2	200.0	255	30.2	2.0	305	22	8	F10

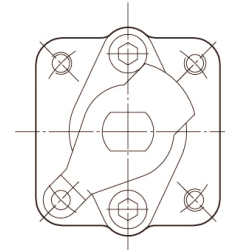


ITEM	PART NAME	MATERIAL	
1	BODY	WCB	CF8M
2	CAP	WCB	CF8M
3	SEATS	PTFE+15%G.F.	
4	BALL	CF8	CF8M
5	STEM	17-4PH	
6	JOINT GASKET	316L+PTFE	
7	GASKET	PTFE	
8	PACKING	GRAPHITE	
9	GLAND BUSH	PTFE	
10	GLAND FLANGE	CF8	
11	ADAPTOR	STEEL	
12	BRACKET	STEEL	
13	HAND WHEEL	S.STEEL	
14	GEAR BOX	STEEL	
15	GLAND BOLTS	SUS304	
16	STUD	A193-B7M	A193-B8M
17	NUT	A194-2HM	A194-8M
18	STATIC DEVICE	SUS316	
19	SPRING	SUS316	
20	HEXGON BOLTS	STEEL Zn+PLATED	

SIZE	A	B	C	D	E	F	G	L	H	N	ISO5211
6"	152	215.9	269.9	320	367.6	610	37	403	22	12	F14
8"	203	269.9	330.2	380	446.5	610	41.7	502	25.4	12	F16

CONSTRUCTION AND MATERIALS FOR EA - 402 NON FIRE-SAFE

NO.	Parts Name	EA402C	EA402F
1	Body	A216 WCB	A351 CF8M
2	End Cap	A216 WCB	A351 CF8M
3	Seats	PTFE + 15% G.F. REINFORCED	
4	Ball	A351 CF8M	A351 CF8M
5	Stem	SUS 316	SUS 316
6	Body Seal	PTFE	
7	Thrust Washer	PTFE	
8	Stem Packing	PTFE	
9	Gland Bush	PTFE	
10	Gland Flange	CF8	
11	Gland Bolts	SUS 304	
12	Stopper	SUS 304	
13	Snap Ring	STEEL	
14	Handle	DUCTILE IRON	
15	Flat Washer	STEEL	
16	Handle Bolt	SUS 304	
17	Stud	ASTMA193 - B8M	
18	Nut	ASTM A194 - 8M	
19	Socket Screw	STEEL	
20	Anti-Static	SUS 304	
21	Spring	SUS 304	

**LOCKING DEVICE
(Lock Open/Lock Close)**


All part numbers are corresponding with those shown in valve assembly drawings.

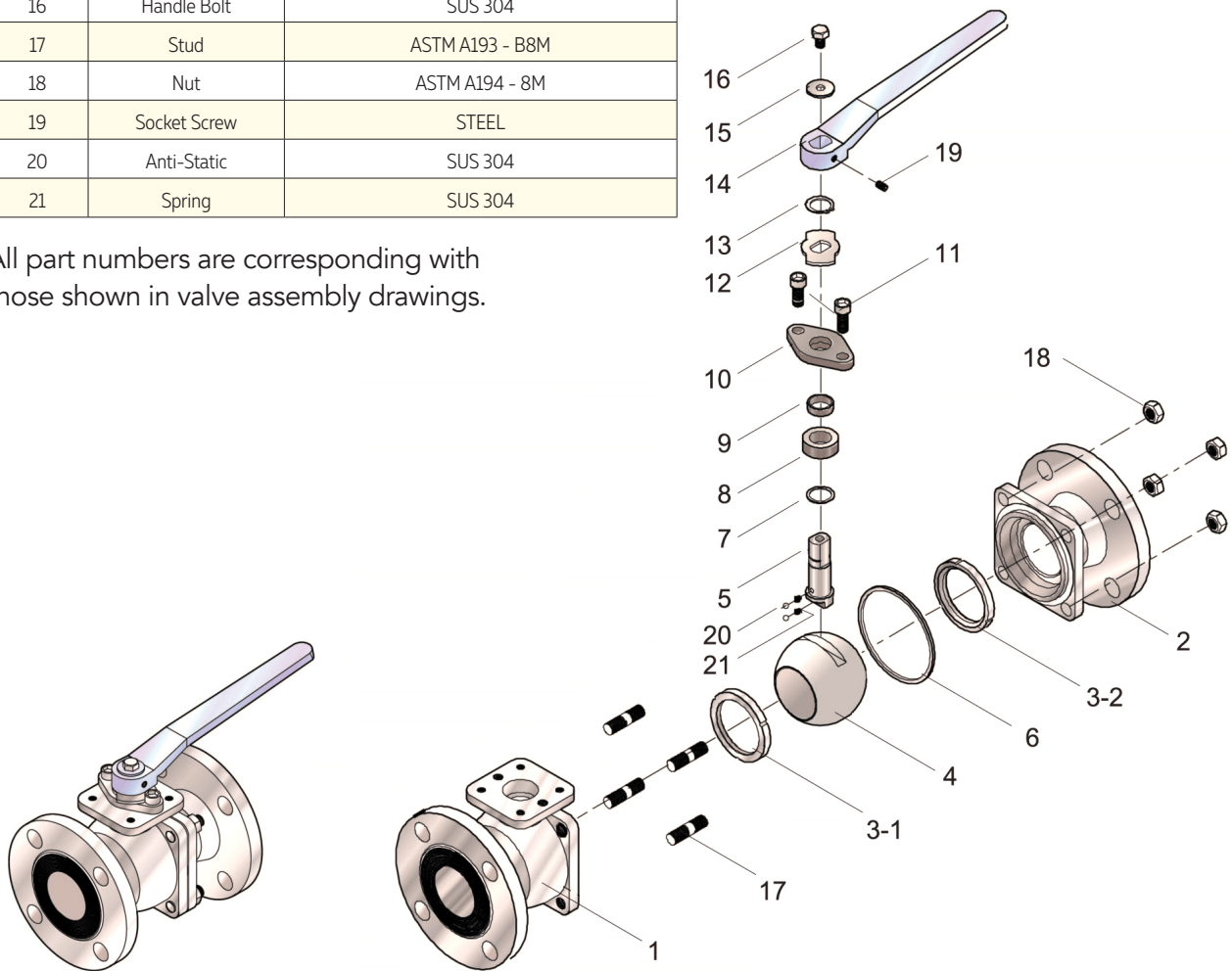
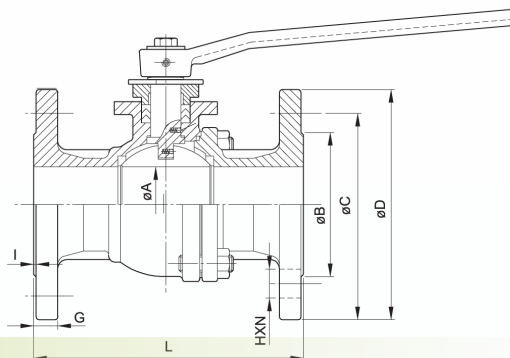


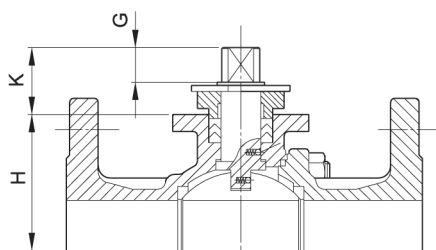
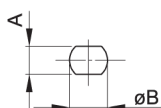
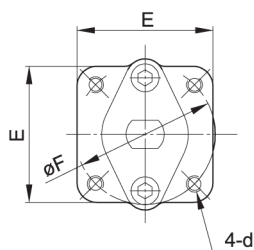
Illustration shows 3" EA - 402 design

DIMENSIONS - CLASS 150 CARBON STEEL & STAINLESS STEEL BALL VALVES



DIMENSIONS OF EA402C & EA402F

SIZE	A	B	C	D	G	I	L	H	N	ISO5211	Wt (kg)
1/2"	16	35	60.5	89	11.1	1.6	108	16	4	F04	1.74
3/4"	20	43	70	98	11.1	1.6	117	16	4	F04	1.99
1"	25	51	79.5	108	11.1	1.6	127	16	4	F05	2.79
1-1/4"	32	64	89	117	12.7	1.6	140	16	4	F05	4.8
1-1/2"	38	73	98.5	127	14.3	1.6	165	16	4	F07	5.5
2"	50	92	120.5	152	15.9	1.6	178	19	4	F07	8.1
2-1/2"	65	105	139.5	178	17.5	1.6	190	19	4	F07	11.7
3"	80	127	152.5	190	19.1	1.6	203	19	4	F10	16.7
4"	100	157	190.5	229	23.9	1.6	229	19	8	F10	27
5"	125	186	215.9	254	23.9	1.6	356	22	8	F10	45
6"	150	216	241.5	279	25.4	1.6	394	22	8	F12	65
8"	200	270	298.5	343	28.5	1.6	457	22	8	F14	138

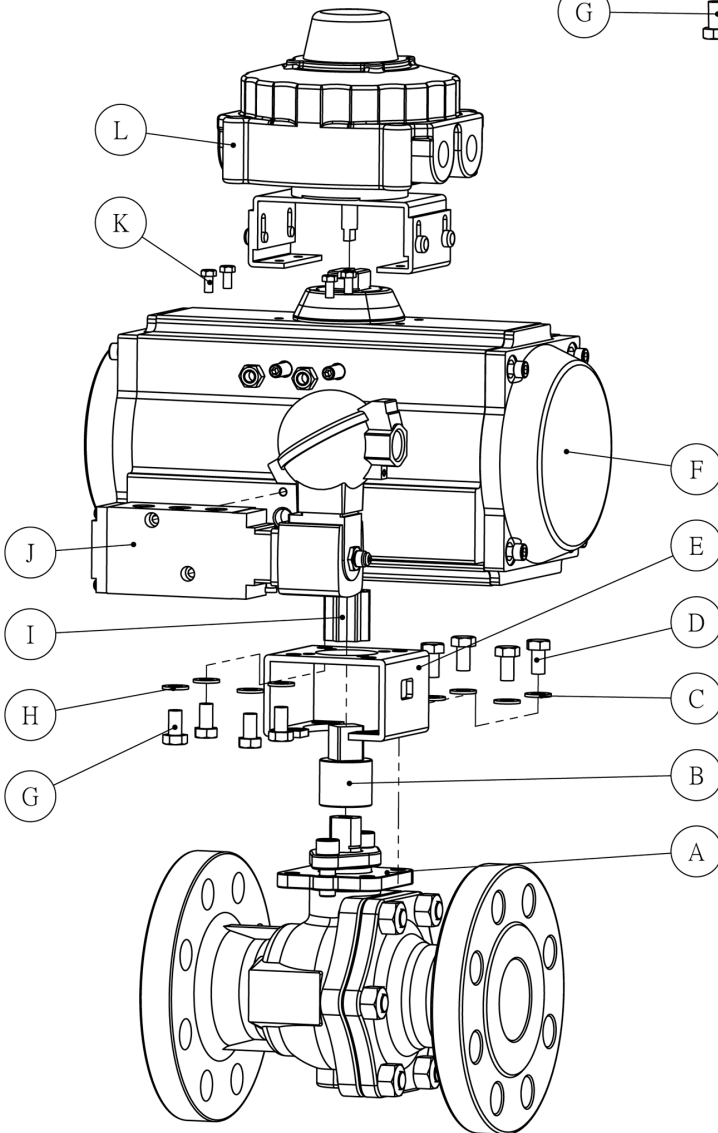
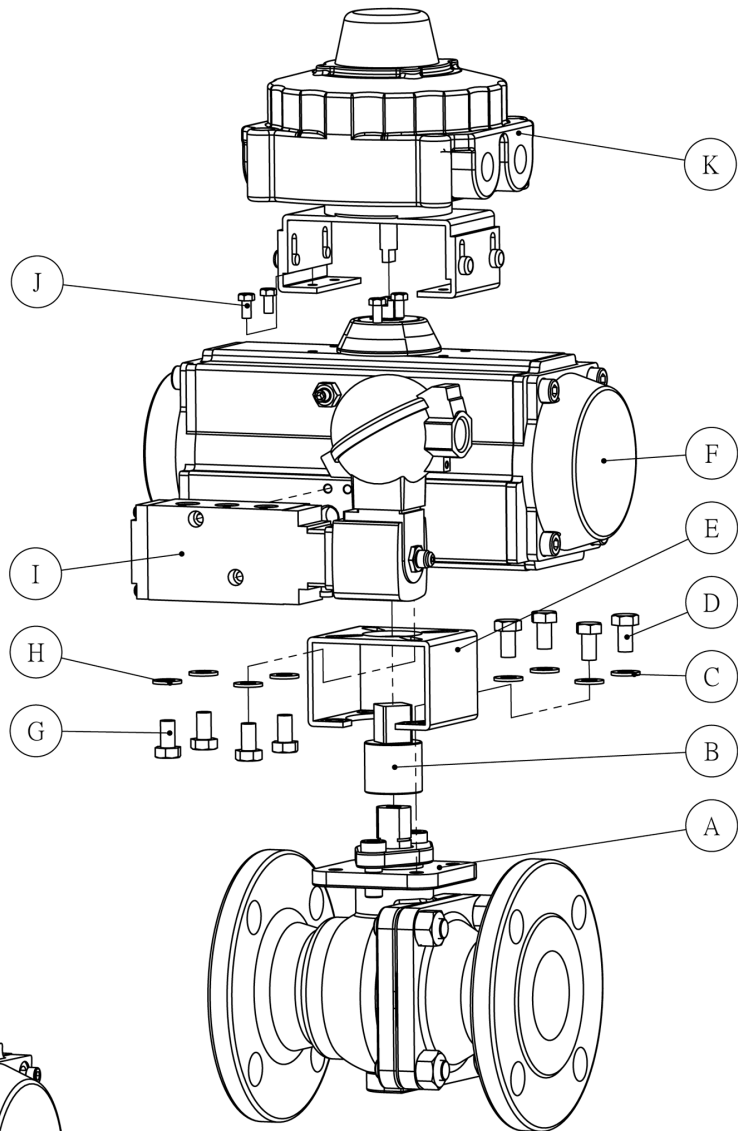


DIMENSIONS OF EA402C & EA402F

SIZE	A	B	D	E	F	G	K	H	ISO5 211
1/2"	8	12	M5	42	42	7.55	19.4	38.52	F04
3/4"	8	12	M5	42	42	7.55	19.4	38.52	F04
1"	10	15	M6	48	50	13.2	27.1	45	F05
1-1/4"	10	15	M6	48	50	13.2	27.9	48.5	F05
1-1/2"	14	19	M8	68	70	17.25	33.4	60.5	F07
2"	14	19	M8	68	70	17.25	33.4	67.9	F07
2-1/2"	14	19	M8	68	70	17.25	33.3	80	F07
3"	16	24	M10	96	102	24.25	44.6	101	F10
4"	16	24	M10	96	102	24.25	44.6	117	F10
5"	20	30	M10	92	102	24.25	47.2	148	F10
6"	26	38	M12	115	125	32.55	63	182	F12
8"	32	48	M16	137.5	140	42.05	76.5	233.5	F14

ITEM	PART NAME
A	BODY
B	ADAPTER
C	FLAT WASHER
D	HEX HEAD SCREW
E	BRACKET
F	ACTUATOR
G	HEX HEAD SCREW
H	FLAT WASHER
I	SOLENOID VALVE
J	HEX HEAD SCREW
K	LIMIT SWITCH

Exploded view of EA - 25A Actuated →



← Exploded view of EA - 25J Actuated

ITEM	PART NAME
A	BODY
B	ADAPTER
C	FLAT WASHER
D	HEX HEAD SCREW
E	BRACKET
F	ACTUATOR
G	HEX HEAD SCREW
H	FLAT WASHER
I	DRIVE SLEEVE
J	SOLENOID VALVE
K	HEX HEAD SCREW
L	LIMIT SWITCH

FEATURES

- Emico fire-safe 2-piece flanged ball valves fitted with Spring Return pneumatic actuators.
- Valves have actuators sized for full rated line pressure (Class150 / Class 300) and based on 550 kPa air supply.
- Actuators sized for 500 kPa & 600 kPa also available.
- Mounting brackets and drive couplings manufactured in stainless steel.
- Valve/actuator mounting can be easily removed for gland packing adjustment.
- Drive couplings have stainless steel fold-down locking tabs to secure gland nut against loosening.
- EMICO valves have ISO 5211 mounting pads for actuation.
- Actuators have Namur-standard air connections and accessory mounts. Also available for piped connections.
- "Bolt-on" accessories include solenoid valve & limit switch.

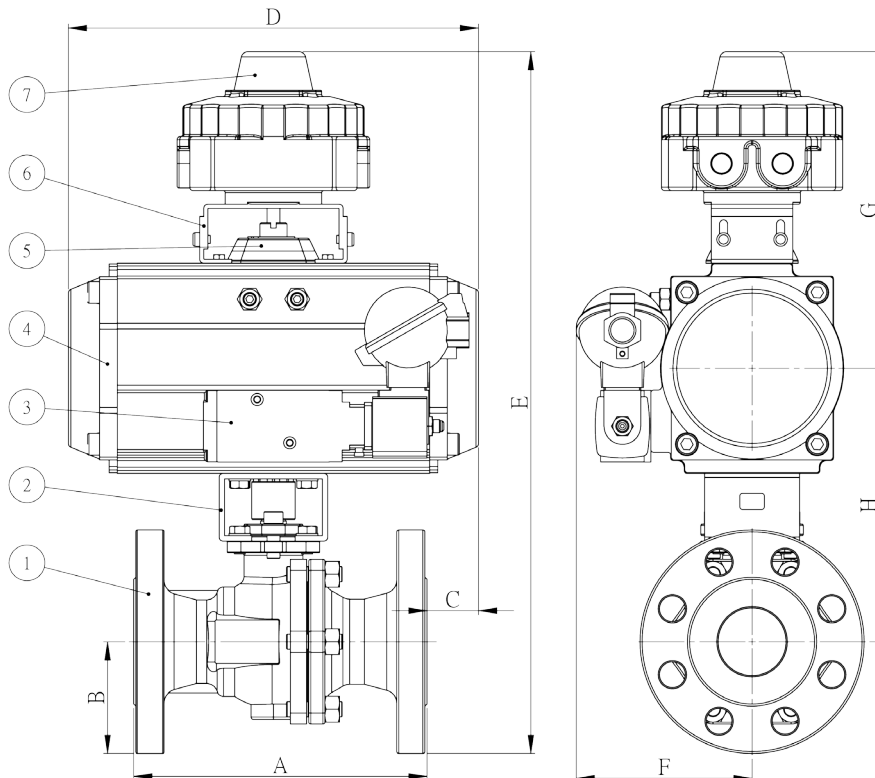


TORQUE DETAILS

Valve Size (mm)	EMICO Fig. No.	Valve Nett Break Torque	Valve Size (mm)	EMICO Fig. No.	Valve Nett Break Torque
15	EA - 25A	6 . 8 Nm	15	EA - 25J	6 . 8 Nm
20	EA - 25A	10 . 8 Nm	20	EA - 25J	10 . 8 Nm
25	EA - 25A	16 . 7 Nm	25	EA - 25J	16 . 7 Nm
40	EA - 25A	28 . 4 Nm	40	EA - 25J	47 . 4 Nm
50	EA - 25A	36 . 3 Nm	50	EA - 25J	82 . 2 Nm
65	EA - 25A	52 Nm			
80	EA - 25A	78 . 4 Nm	80	EA - 25J	117 . 8 Nm
100	EA - 25A	112 . 7 Nm	100	EA - 25J	233 . 6 Nm
150	EA - 25A	245 . 1 Nm	150	EA - 25J	503 . 6 Nm
200	EA - 25A	735 . 3 Nm	200	EA - 25J	1507 . 2 Nm

REFER TO EMICO TECHNICAL BULLETIN NO. 8591- 04/18 29TH MAY 2017
FOR AGA AUTOMATIC SHUT-OFF & VENT VALVE CLASS 1 DETAILS

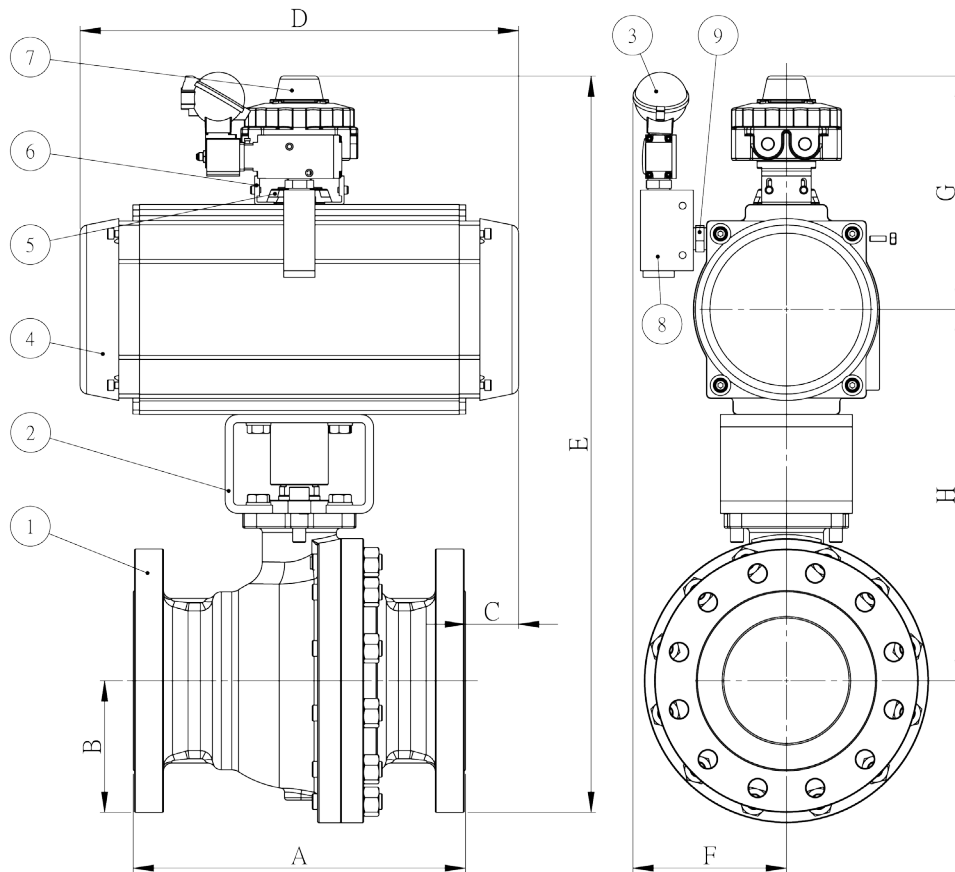
Item	Description	Material
1	EMICO Ball Valve, Split-Body, Full Port Flanged	CS WCB, SS CF8M, Other
2	Mounting Bracket (Valve / Actuator)	S/Sto 50mm, Plated M/S above
3	3/2 Way Solenoid Valve	Polyamide, Aluminium, Stainless Steel
4	EMICO Spring Return Pneumatic Actuator	Al. Alloy
5	Visual Position Indicator	ABS
6	Mounting Bracket (Limit Switch / Actuator)	Steel (Powder Coated)
7	Limit Switch	Al. Alloy



EMICO BALL VALVE (FULL BORE)		SPR RTN ACTUATOR	SOL VALVE	LIMIT SWITCH	DIMENSIONS (mm)							
PART NO.	SIZE (mm)	EMICO PART NO.	(BURKERT/POWER-GENEX)		A	B	C	D	E	F	G	H
EA-25A Class 150	15	EA-SR52/11	TYPE 6519/ TYPE 6518/ ESV-S	ALS-400M2/ ALS-500M2/ ALS-200M2/ LSB-3000	108	44.5	88.4	217	344.7	96.5	192.1	180.2
	20	EA-SR63/11			117	49	88.6	228	370.6	102	200.1	120.5
	25	EA-SR75/10			127	54	83.1	227.8	394.7	102	200.1	139.6
	40	EA-SR92/10			165	63.5	60.3	276	439.4	112	210.6	165.4
	50	EA-SR92/10			178	76	48.9	276	468.2	114.2	214.6	177.7
	65	EA-SR105/11			190	89	47.1	280	508.1	119	222.6	196.5
	80	EA-SR125/10			205	95	33.3	302	572.3	129.5	233.6	243.7
	100	EA-SR140/10			229	114.5	68.4	398	632.6	200.7	242.1	276
	150	EA-SR190/10	394	139.5	31	458	776.6	287.2	254.6	382.5		
	200	EA-SR270/11		TYPE 6518								

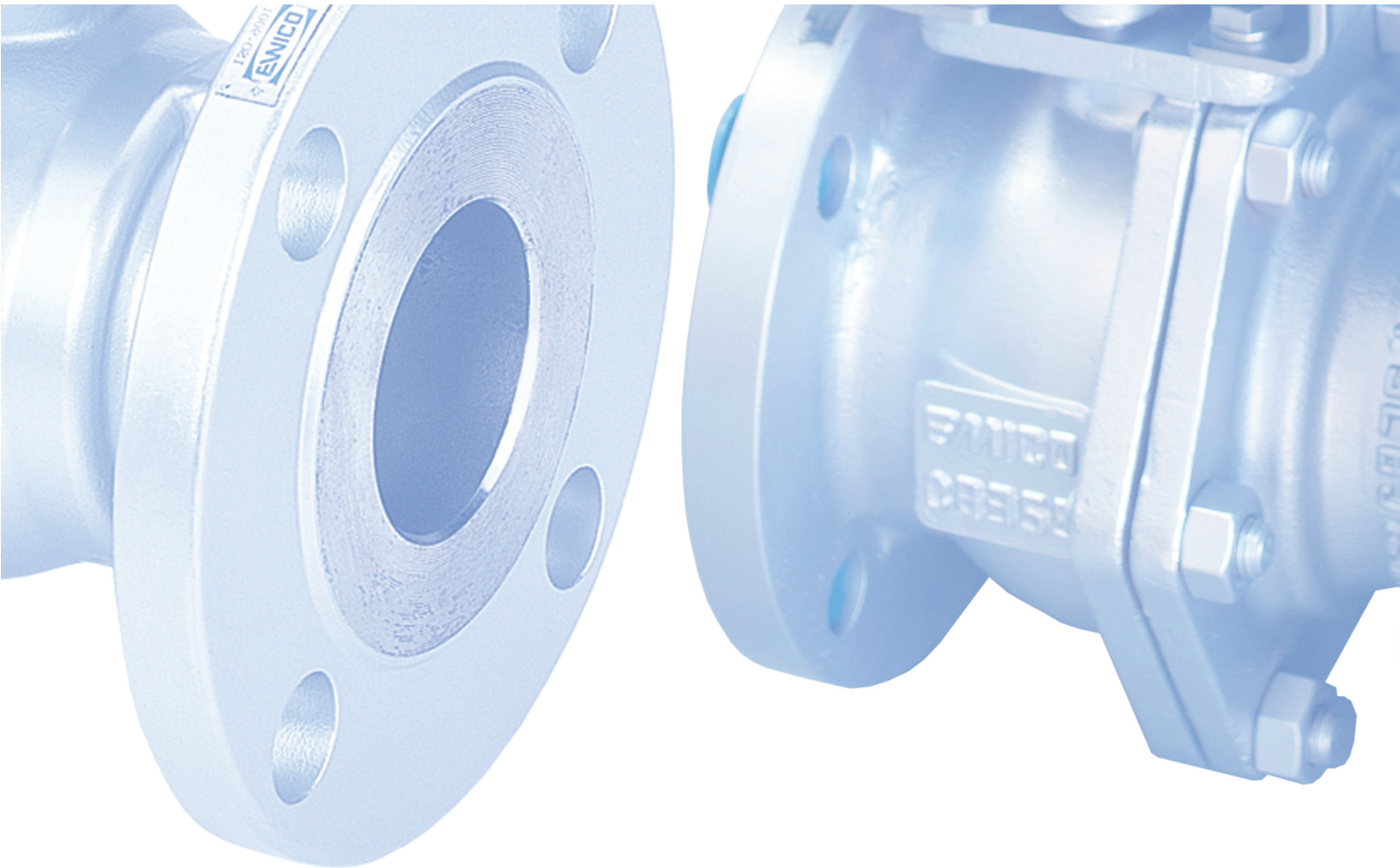
*Note: Actuator default sizing based on 5.5 bar (80psi)

EMICO BALL VALVE (FULL BORE)		SPR RTN ACTUATOR	SOL VALVE	LIMIT SWITCH	DIMENSIONS (mm)							
PART NO.	SIZE (mm)	EMICO PART NO.	(BURKERT/POWER-GENEX)		A	B	C	D	E	F	G	H
EA-25J Class 300	15	EA-SR52/11	TYPE 6519/ TYPE 6518/ ESV-S	ALS-400M2/ ALS-500M2/ ALS-200M2/ LSB-3000	140	47.5	72.2	217	352.1	96.5	192.1	112.5
	20	EA-SR63/11			152.4	58.7	65.8	227.8	379.2	102	200.1	120.5
	25	EA-SR75/10			165	62	56.5	237	401.7	108	206.1	133.6
	40	EA-SR105/11			190.5	78	47.6	280	477.9	119	222.6	177.4
	50	EA-SR125/10			216	82.5	37.9	302	517.7	129.5	233.6	201.7
	80	EA-SR140/10	283		105	44.1	398	607.3	200.7	242.1	260.2	
	100	EA-SR190/10	305		127	69.4	525	677.6	210.7	254.6	295.5	



EMICO BALL VALVE (FULL BORE)		SPR RTN ACTUATOR	SOL VALVE	LIMIT SWITCH	QUICK EXHAUST VALVE	DIMENSIONS (mm)							
PART NO.	SIZE (mm)	EMICO PART NO.	(BURKERT/POWER-GENEX)		SIZE (mm)	A	B	C	D	E	F	G	H
EA-25J Class 300	150	EA-SR240/11	TYPE 6518	ALS-400M2/ ALS-500M2/ ALS-200M2/ LSB-3000	20	403	160	64.5	532	894.3	188.8	283.6	450.7
	200	EA-SR350/10											

*Note: Actuator default sizing based on 5.5 bar (80psi)



Australia:

RAZVALVE PACIFIC PTY LTD.

Office & Warehouse:

13/28 Enterprise Drive,
Rowville, Victoria 3178, Australia

Ph: 61 (03) 9764 1149
Email: sales@razvalve.com

Website: www.razvalve.com
www.emicovalves.com

Taiwan:

EAYUAN METAL INDUSTRIAL CO. LTD. (EMICO)

Office:

16F-8, No. 386, Shizheng Rd., Xitun Dist.
Taichung City 407, Taiwan

Ph: 886-4-2259 1616

