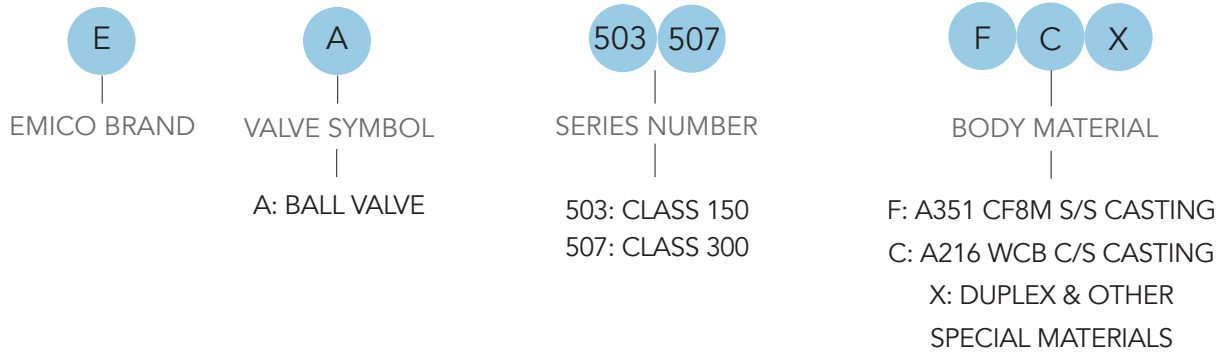


EMICO

EA-503 & EA-507 CLASS 150 & 300 REDUCED PORT BALL VALVES

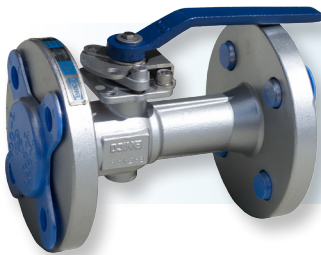


AGA - APPROVED MANUAL & AUTOMATIC



APPLICATIONS

EMICO Flanged ball valves comply with API & ASME / ANSI standards and are suitable for oil & petroleum, LP Gas, petrochemical processing, pulp & paper, general industry. The valves are suitable for handling a variety of fluids in corrosive and non-corrosive applications in oil, petrochemical, chemical, gas, paper, and general processing.

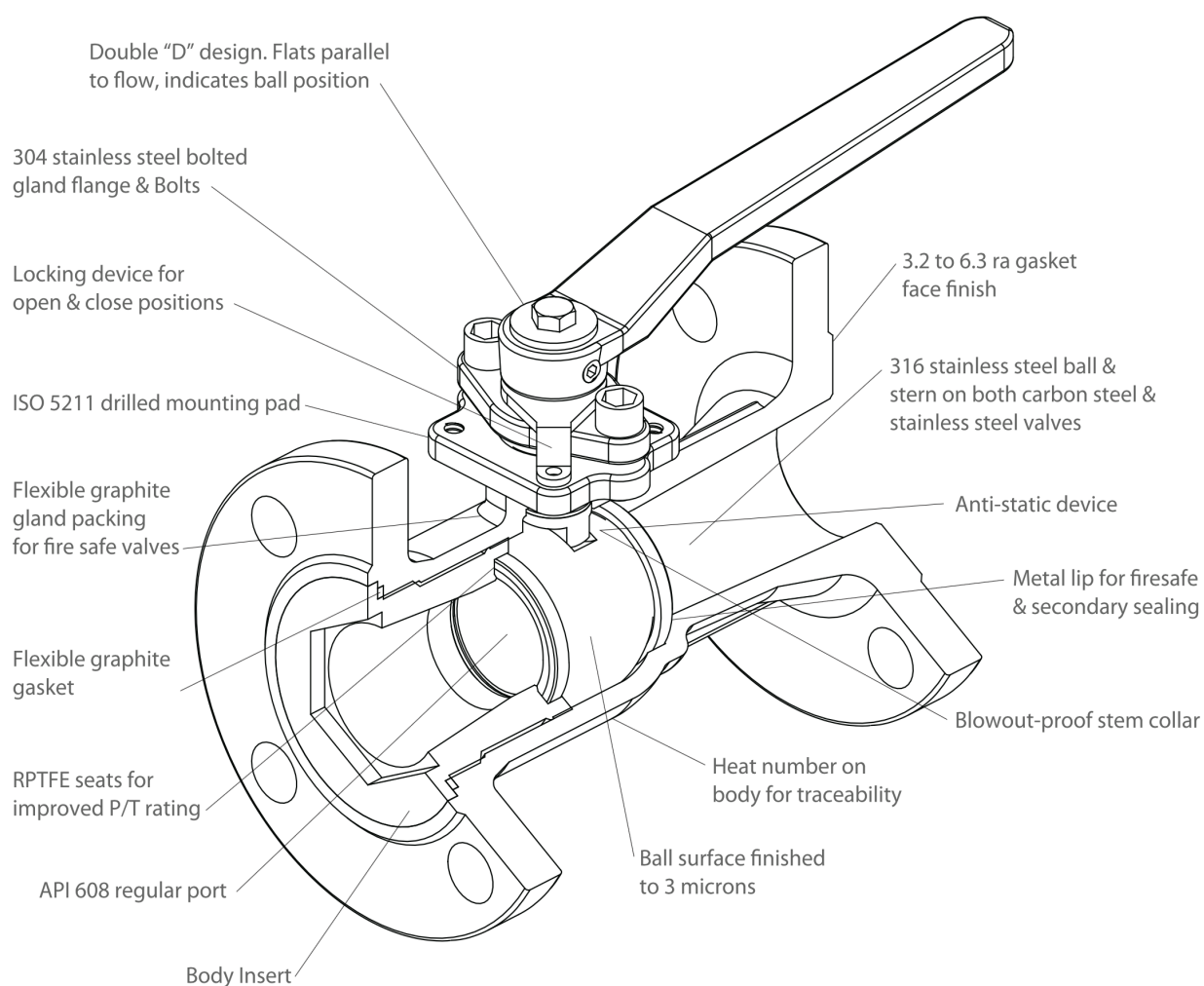


- Reduced Bore
- ANSI Class 150 & Class 300
- Range: 15mm - 200mm
- ISO 5211 Mounting Pad
- Locking Device: Standard
- API 608
- Anti - static
- Fire-Safe API 607

EMICO Flanged Ball Valve Main Technical Specifications	EA-503 Class 150 Reduced Bore	EA-507 Class 300 Reduced Bore
Wall thickness in accordance with B16.34	Yes	Yes
Wall thickness in accordance with API 6D	Yes	Yes
Heavy duty bolt/nut in accordance with B16.34	Yes	Yes
Heavy duty bolt/nut in accordance with API 6D	Yes	Yes
Flange thickness in accordance with B16.5	Yes	Yes
Solid ball	Yes	Yes

Name Plate Details

 150-9001	FIG SIZE		BODY TRIM SEAT		F. S. P/T MF' D	
	CLASS					



DESIGN

WALL THICKNESS:

BODY:

TEST, SHELL & SEAT:

SEALING:

WORKING PRESSURE:

FIRE SAFE TEST:

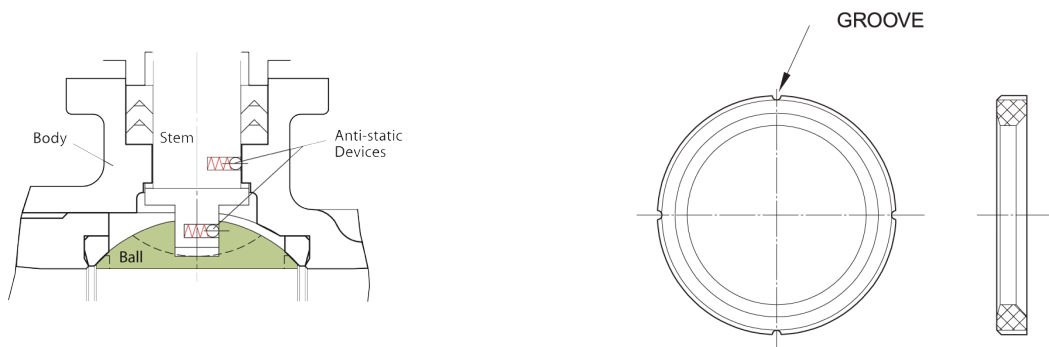
TEMPERATURE RANGE:

AGA APPROVALS:



- ASME B16.34, API608
- Castings
- API 598
- Bubble-tight bi-directional
- ASME Class 150 & Class 300
- API 607 Edition 5
- Tested and Certified
- 29° to 232°C
- (i) Manual Shut-off Class 1
AS 4617 - 2004 (Incl. Amd1 & 2) -
Certificate No. 8591
- (ii) Automatic Shut-off Valve & Vent Valve Class 1
AS 4629 - 2005 (Incl. Amd1 & 2) -
Certificate No. 8590

Quality manufactured & tested under Quality Assurance systems ISO 9001 & 9002



FEATURES

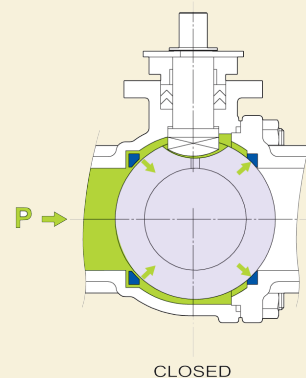
- **Anti-Static Plunger** - Positive earthing of ball and stem to valve body, preventing static electricity build-up.
- **Blowout-Proof Stem** - Internally fitted back-seated stem prevents anti-blowout under pressure and also functions as the backseat for stem sealing.
- **Locking Device** - locks valve in open and closed positions to prevent accidental valve operation.
- **Double "D" Stem Design** - Ensures lever can only be fitted in line with flow direction for positive open / closed indication.
- **ISO 5211 Actuator Mount** - Integral actuator mounting pad as standard for all modern pneumatic and electric actuators.
Stem bearing on 150mm & 200mm valves, reduces side thrust.
- **Bolted Gland Flange** - Actuators can be fitted to the valve without disturbing the gland.
- **316SS Corrosion Resistant Trim** - For longer valve life.
- **15% Glass Fibre Reinforced PTFE** - For higher pressure / temperature rating. Other seat materials are optionally available including Pure PTFE & Carbon-Filled PTFE.
- **Pressure Equalising Grooves** - Ensure efficient sealing at all pressures.

Velocity increases just before valve closure and when the ball is cracked off its seat. At these points, the seats are only partially supported by the ball.

The equalising grooves prevent seat damage from increased line velocity around the unsupported section of the seats. They reduce damage from cold flow (where seats are damaged by extrusion around the ball - a weakness of PTFE under pressure).

Pressure equalising grooves ensure that the upstream seat is free floating. Force acting on the downstream seat is limited to pressure exerted on the surface of the ball only and not the ball plus the upstream seat surfaces combined (piston effect). See sketch below.

Advantage of this feature is lower valve break torque and seat wear.



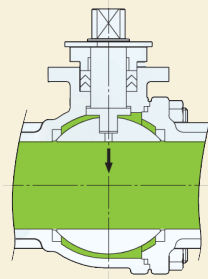
FEATURES

- **Uni-body Design** - Has no body joints and minimises leak paths.
- **Testing** - All valves have 100% seating and body test.
- **Identification** - Every Body & Cap is Heat Numbered, fully certified and traceable, Month & Year of manufacture on name plate tag.
- **Stock** - Repair Kits comprising seats, body seal, gland packing, thrust washer & stem bearing.

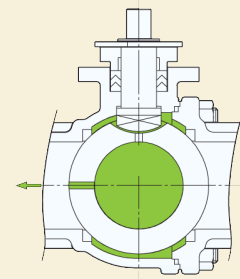
CAVITY PRESSURE RELIEF HOLES:
 Heating of volatile fluid trapped in the body cavity can cause pressure build-up, permanently distorting the seats or the ball unless properly relieved with cavity pressure relief holes.

Valve Open (standard) - With the valve in the open position, pressure equalisation between the body cavity and the line is achieved by a hole in the ball beneath the stem slot. This is standard on all EMICO ball valves (See sketch below).

Valve Closed (optional) - Internal Pressure equalising vent (hole drilled in upstream side of ball) can be supplied for certain applications e.g. ammonia, chlorine, LPG (See sketch below).



VALVE OPEN



VALVE CLOSED

DESIGN & TESTING STANDARDS & SPECIFICATIONS

Pressure / Temperature Rating:

Shell: ASME / ANSI B16.34

Shell Wall Thickness:

Valve: Valve Seat Materials (page 8)

Design:

ASME / ANSI B16.34

Face to Face:

API 608

Flange Dimensions:

ASME / ANSI B16.10

Materials:

ASME / ANSI B16.5

Marking:

ASTM

Valve Testing:

MSS SP 25

Fire Safe Testing:

API 598

NACE:

API 607 Edition 5 (ISO 10497-5: 2004)

Material & Test Certification:

MR0175

EN 10204 - 2004 3.1

EMICO BALL VALVE FIRE SAFE TO API 607 ED. 5 (ISO 10497-5: 2004)

EMICO EA-503 & EA-507 ball valves have independently witnessed fire tests to API 607 Ed. 5 (ISO 10497-5: 2004). These tests were performed and witnessed by TUV Rheinland, Taiwan.

TYPICAL EMICO FIRE SAFE TEST CERTIFICATES

EMICO fire safe ball valves are designed & manufactured to an approved fire safe tested standard to minimise both external and internal fluid leakages in the event of a plant fire.



FIG. 1 - BALL/BODY CONTACT

- Contact between the ball and the fire safe lip of the body.
- Covers internal leakage.
- All fire safe valves are fitted with flexible graphite body seals and graphite stem packing.

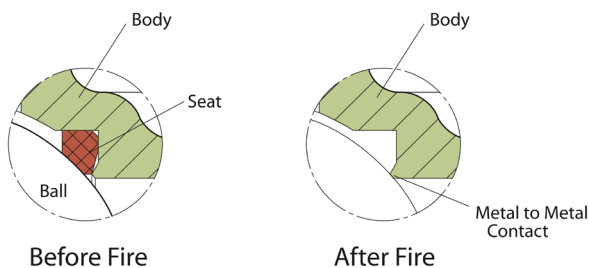
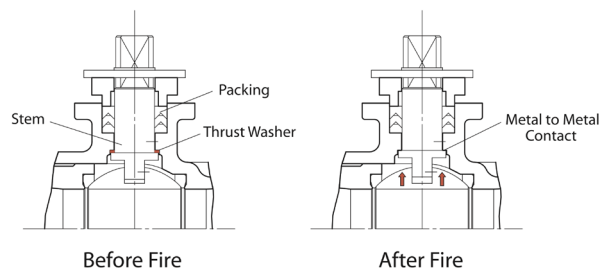


FIG. 2 - STEM/BODY CONTACT

- Contact between the stem shoulder and machined backseat of body.
- Covers external leakage.
- All fire safe valves are fitted with flexible graphite body seals and graphite stem packing.



size: 1" ~ 8"

AGA CERTIFIED PRODUCT



Certificate Holder: **EAYUAN METAL INDUSTRIAL CO LTD**
 ABN/ACN No. (if applicable): **N/A**
 Manufacturer: **Eayuan Metal Industrial Co Ltd**
 Agent (if applicable): **N/A**
 Type of Component: **Type 1 Manual Shut-off Valves**



Model No. & Description: **EMICO**
 (Refer www.aga.asn.au for more details)

Model	Sizes	Maximum working pressure	Working temperature range
EA-25A	15mm, 20mm, 25mm, 40mm, 50mm, 65mm, 80mm, 100mm, 150mm, 200mm	1960 kPa	0 °C – 60 °C
EA-25J	15mm, 20mm, 25mm, 40mm, 50mm, 65mm, 80mm, 100mm, 150mm, 200mm	4800 kPa	0 °C – 60 °C
EA-503	20mm, 25mm, 40mm, 50mm, 65mm, 80mm, 100mm, 150mm, 200mm	1960 kPa	0 °C – 60 °C
EA-507	20mm, 25mm, 40mm, 50mm, 65mm, 80mm, 100mm, 150mm, 200mm	4800 kPa	0 °C – 60 °C

Relevant Standard(s): **AS 4617 – 2004**
 (Incorporating Amendment Nos, 1 & 2)

This is to certify that the particular **COMPONENT** specifically described herein and supplied to The Australian Gas Association (hereafter called the AGA) by the Certificate Holder named above has been subject to "type-testing" and assessed by the AGA to comply with the requirements of the AGA's Product Certification Scheme for Type Tested Gas Products.

This Certificate is issued on the express conditions that:

- (i) The Certificate Holder undertakes to comply with the Rules Governing The AGA's Product Certification Scheme (hereafter called the Rules Governing);
- (ii) This Certificate remains the property of the AGA; and
- (iii) The AGA reserves the right to cancel this Certificate in accordance with the Rules Governing, and in such an event the Certificate Holder undertakes to surrender the Certificate to the AGA upon request.



[Signature]
 Client Manager

[Signature]
 Certificate Authorised

Certificate first issued: **27 June 2018** Certificate No: **8591**
 This copy valid from: **27 June 2018** Refer specification issue: **01**

QF714/11

This Certificate issued by The Australian Gas Association ABN 98 004 206 044



Certificate No:
AGA 8591 G
EA-503/EA-507
EA-25A/EA-25J



MANUAL VALVE TAG PLATE DATA

AGA CERTIFIED PRODUCT



Certificate Holder: **EAYUAN METAL INDUSTRIAL CO LTD**
 ABN/ACN No. (if applicable): **N/A**
 Manufacturer: **Eayuan Metal Industrial Co Ltd**
 Agent (if applicable): **N/A**
 Type of Component: **Class 1 Automatic Shut-off Valves and Vent Valves**



Model No. & Description: **EMICO**
 (Refer www.aga.asn.au for more details)

Model	Sizes	Maximum working pressure	Working temperature range
EA-25A	15mm, 20mm, 25mm, 40mm, 50mm, 65mm, 80mm, 100mm, 150mm, 200mm	1960 kPa	0 °C – 60 °C
EA-25J	15mm, 20mm, 25mm, 40mm, 50mm, 65mm, 80mm, 100mm, 150mm, 200mm	4800 kPa	0 °C – 60 °C
EA-503	20mm, 25mm, 40mm, 50mm, 65mm, 80mm, 100mm, 150mm, 200mm	1960 kPa	0 °C – 60 °C
EA-507	20mm, 25mm, 40mm, 50mm, 65mm, 80mm, 100mm, 150mm, 200mm	4800 kPa	0 °C – 60 °C

Solenoid options:
 - Burkert 6519 or 6518
 - Power-Genex ESV-S

Limit switch options:
 - ALS-400M2, ALS-500M2, ALS-200M2
 - Power-Genex LSB-3000

Relevant Standard(s): **AS 4629 – 2005**
 (Incorporating Amendment Nos, 1 & 2)

This is to certify that the particular **COMPONENT** specifically described herein and supplied to The Australian Gas Association (hereafter called the AGA) by the Certificate Holder named above has been subject to "type-testing" and assessed by the AGA to comply with the requirements of the AGA's Product Certification Scheme for Type Tested Gas Products.

This Certificate is issued on the express conditions that:

- (i) The Certificate Holder undertakes to comply with the Rules Governing The AGA's Product Certification Scheme (hereafter called the Rules Governing);
- (ii) This Certificate remains the property of the AGA; and
- (iii) The AGA reserves the right to cancel this Certificate in accordance with the Rules Governing, and in such an event the Certificate Holder undertakes to surrender the Certificate to the AGA upon request.



[Signature]
 Client Manager

[Signature]
 Certificate Authorised

Certificate first issued: **21 June 2018** Certificate No: **8590**
 This copy valid from: **26 June 2018** Refer specification issue: **02**

QF714/11

This Certificate issued by The Australian Gas Association ABN 98 004 206 044



Australian Standard AS 4629-2005 (Amdt. 1 & 2)
AGA Certificate No. AGA 8590 G

- Automatic Shut-Off Valves, Class 1
- Automatic Vent Valves, Class 1

Valve Model: EA- 25A 25J 503 507 C F

Flanged Ends: Class 150 Class 300

Serial No: **M/Y:** **P/T:** 1960 4800 /0-60°C

c/w Emico Actuator: EA-SR

Solenoid: 6519 6518 ESV GP Ex

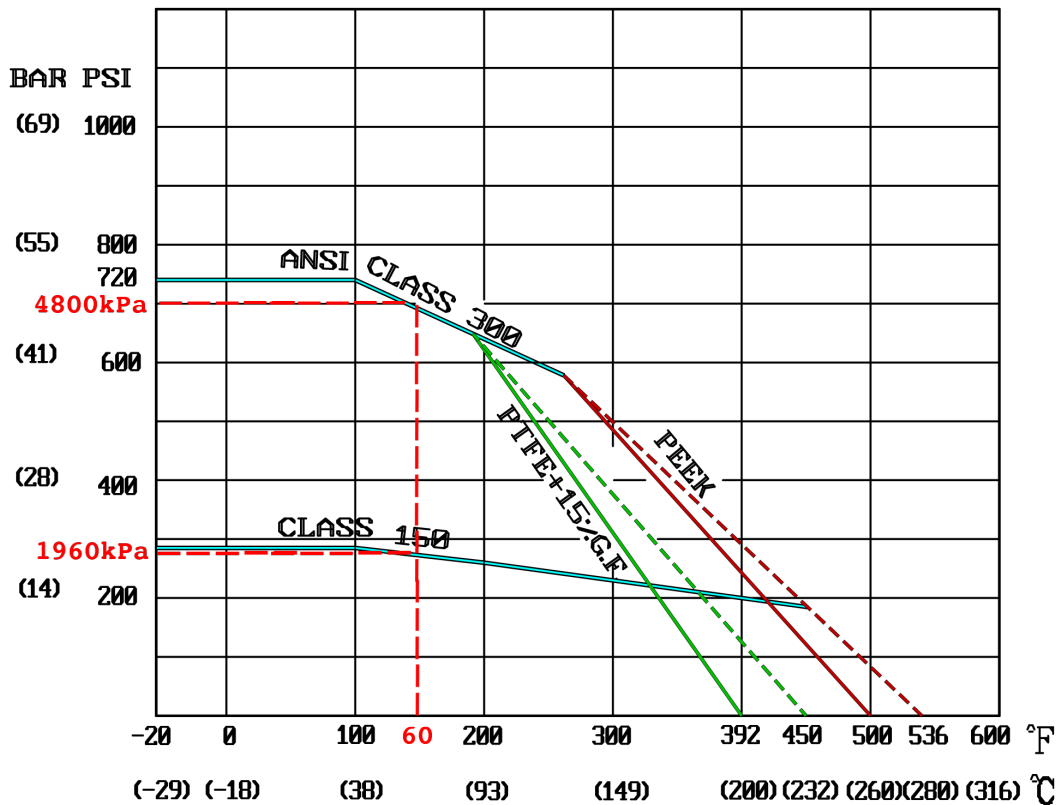
Limit Switch: ALS- 400M2 500M2 200M2 / LSB - 3000

Supplied by: **RAZVALVE PACIFIC** 03 9764 1149



AUTOMATIC SHUT-OFF AND VENT VALVE TAG PLATE DATA

PRESSURE & TEMPERATURE DETAILS



ADDITIONAL EA-503 CLASS 150 BALL VALVE DETAILS

Maximum pressure over working temperature range:
 For standard valve: 0kPa @ 232°C
 As AGA-tested valve: 1,960kPa @ 60°C

Maximum pressure over working temperature range:
 For standard valve: 38°C @ 2,000kPa
 As AGA-tested valve: 60°C @ 1,960kPa

Type of valve: Ball valve
 Class of Automatic shut-off valve: Class 1

ADDITIONAL EA-507 CLASS 300 BALL VALVE DETAILS

Maximum pressure over working temperature range:
 For standard valve: 0kPa @ 232°C
 As AGA-tested valve: 4,800kPa @ 60°C

Maximum pressure over working temperature range:
 For standard valve: 38°C @ 5,000kPa
 As AGA-tested valve: 60°C @ 4,800kPa

Type of valve: Ball valve
 Class of Automatic shut-off valve: Class 1

KEY

Solid Lines - Continuous Temperature

Dotted Lines - Intermittent/Peak Temperature

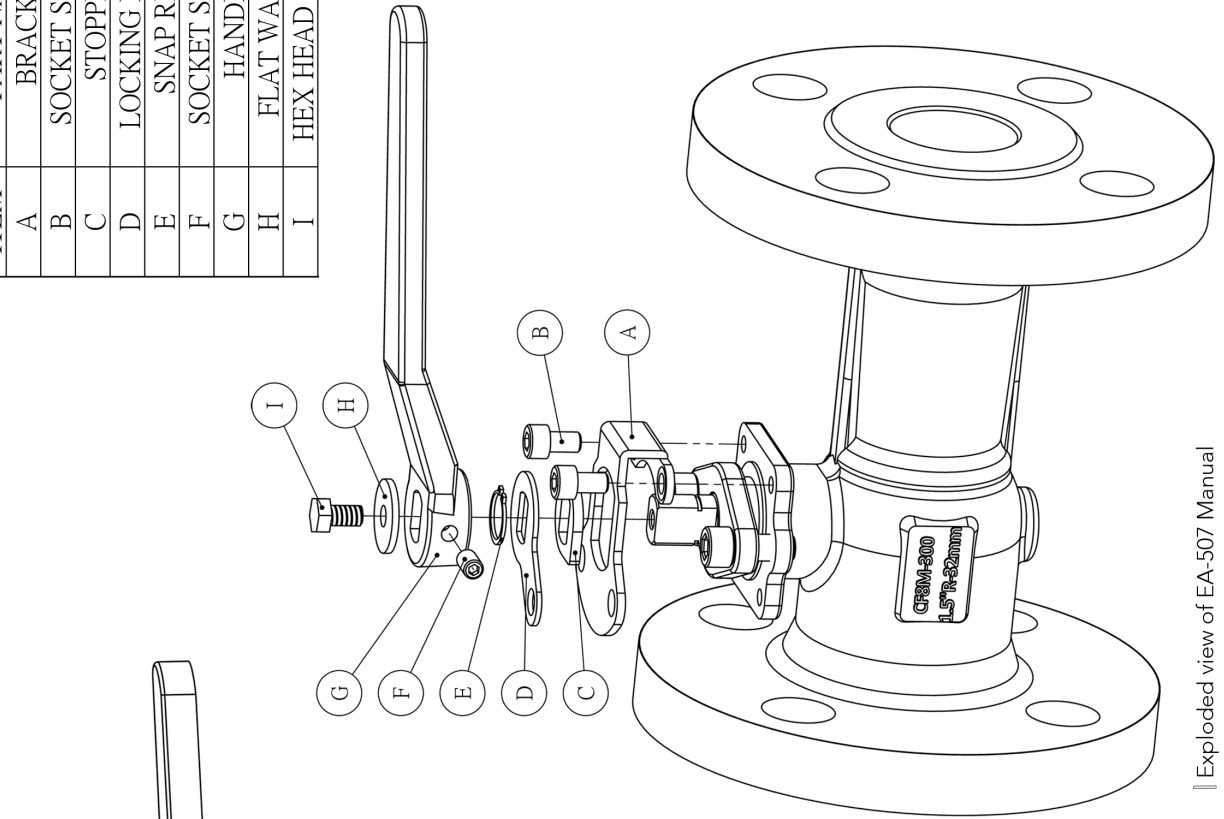
Red-dashed Lines - AGA valve product testing

APPLICABLE FIG: EA503 (150LB) / EA507 (300LB)

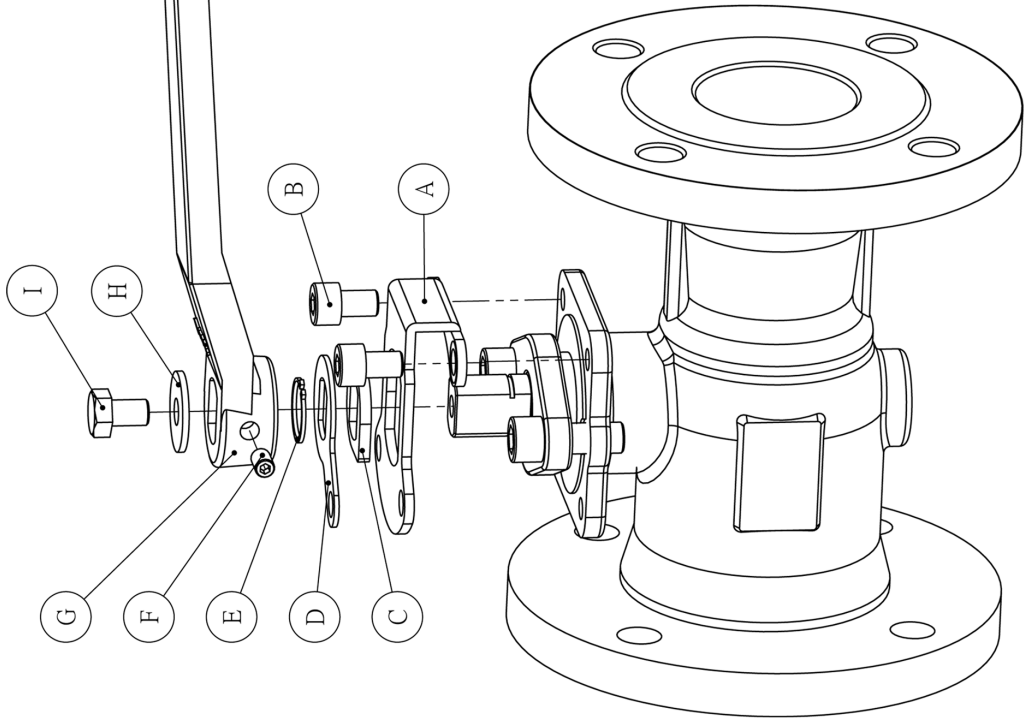
1960kPa @ 60°C (EA-503 / Class 150)

4800kPa @ 60°C (EA-507 / Class 300)

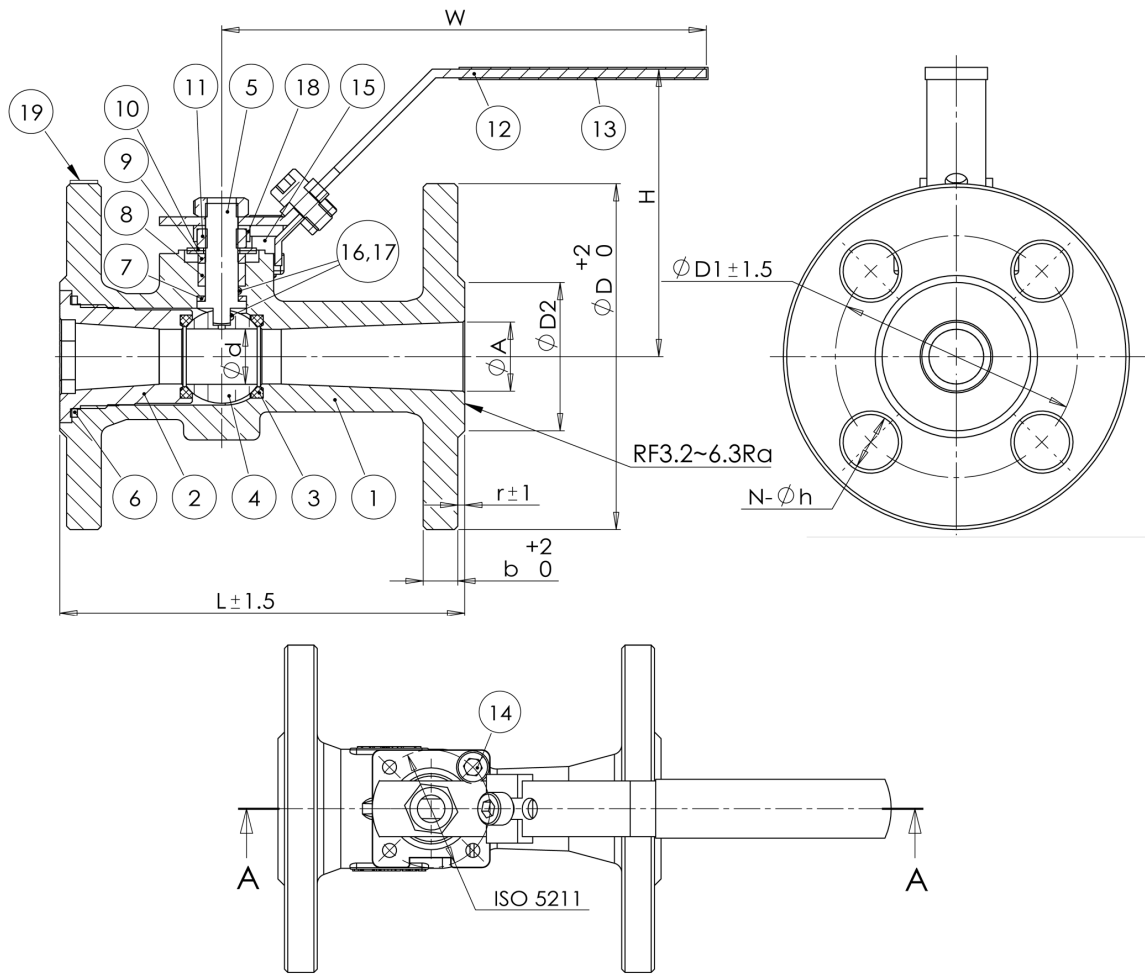
ITEM	PART NAME
A	BRACKET
B	SOCKET SCREW
C	STOPPER
D	LOCKING PLATE
E	SNAP RING
F	SOCKET SCREW
G	HANDLE
H	FLAT WASHER
I	HEX HEAD SCREW



|| Exploded view of EA-507 Manual

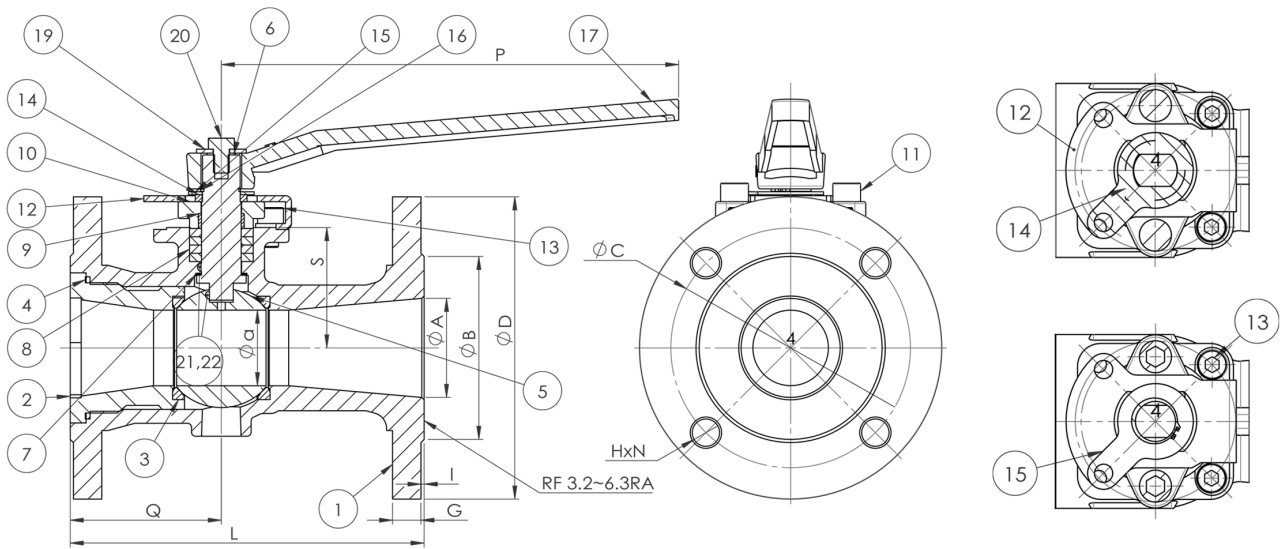


|| Exploded view of EA-503 Manual



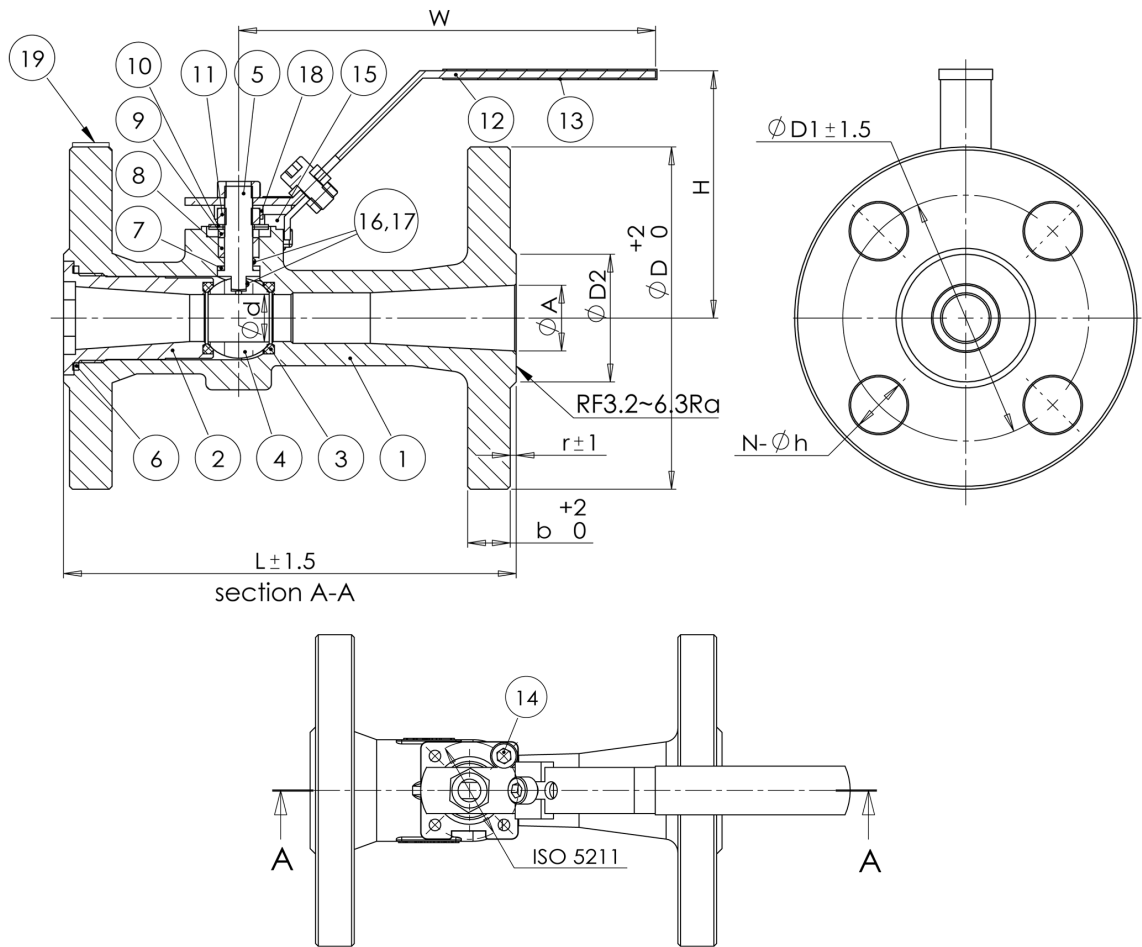
ITEM	DESCRIPTION	MATERIAL			Q'ty
1	BODY	A216-WCB	A351-CF8M	A352-LCC	1
2	SEAT RETAINER	A216-WCB	A351-CF8M	A352-LCC	1
3	SEATS	PTFE+15%GF			2
4	BALL	A351-CF8M			1
5	STEM	A276-316			1
6	JOINT GASKET	GRAPHITE			1
7	GASKET	PTFE+15%GF			1
8	PACKING	GRAPHITE			1
9	GLAND RING	A276-304			1
10	BELLEVILLE SPRING WASHER	A240-301			2
11	LEVER NUT	A276-304			2
12	HANDLE	A240-304			1
13	PLASTIC COVER	VINYL			1
14	SOCKET HEAD SCREW	F593 304			1
15	SPACER	A276-304			1
16	STATIC DEVICE	A276-316			2
17	SPRING	A276-316			2
18	LOCKING TAB	A240-304			1
19	TAG	A240-304			1

SIZE	d	A	D2	D1	D	b	r	L	N-Øh	W	H	ISO5211
3/4"	15.8	20	42.9	69.9	100	8.9	2	117	4-16	140	83	F03



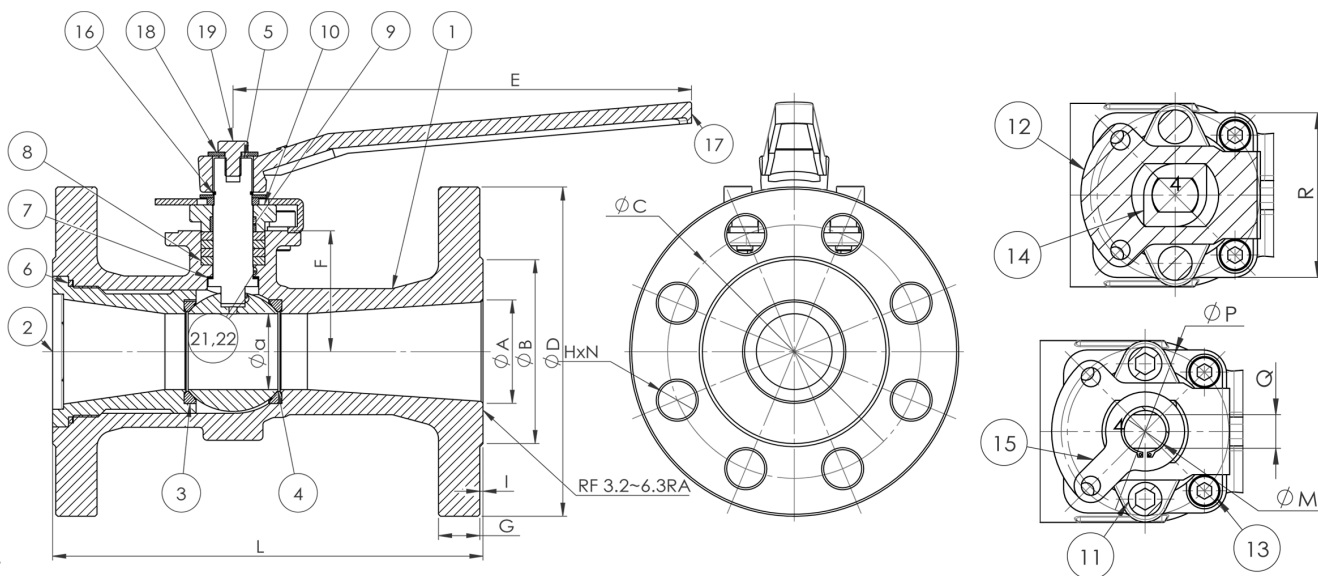
ITEM	PART NAME	MATERIAL	QTY
22	Spring	A276-316	2
21	Static Device	A276-316	2
20	Hexagonal Screw	SS304	1
19	Flat Washer	SS304	1
18	Socket Screw	C.STEEL	1
17	Handle	A216-WCB	1
16	Snap Ring	SS420	1
15	Stop Plate	SS304	1
14	Locking Plate	SS304	1
13	Sockethead Screw	SS304	2
12	Bracket	SS304	1
11	Sockethead Screw	SS304	2
10	Gland Flange	A351-CF8	1
9	Stem Bearing	PTFE	1
8	Packing	GRAPHITE	1
7	Gasket	PTFE + 15% GF	1
6	Stem	A276-316	1
5	Ball	A351-CF8M	1
4	Body Seal	GRAPHITE	1
3	Seat	PTFE + 15% GF	2
2	Set Retainer	A216-WCB A351-CF8M A352-LCC	1
1	Body	A216-WCB A351-CF8M A352-LCC	1

SIZE	a	A	B	C	D	G	I	L	H	N	P	Q	S	ISO5211
1"	20	25	50.8	79.4	110	9.6	2	127	16	4	135	50.8	38.5	F05
1-1/2"	32	38	73	98.4	125	12.7	2	165	16	4	160	66	50.6	F05
2"	38	50	92.1	120.7	150	14.3	2	178	19	4	230	76	60.5	F07
2-1/2"	50	65	104.8	139.7	180	15.9	2	190	19	4	230	81	67.4	F07
3"	58	80	127	152.4	190	17.5	2	203	19	4	350	92.2	89.9	F10
4"	76	100	157.2	190.5	230	22.3	2	229	19	8	350	96.6	108.7	F10
6"	111	150	215.9	241.3	280	23.9	2	267	22	8	400	133.6	140	F10
8"	144	200	269.9	298.5	345	27	2	292	22	8	800	146	182	F12



ITEM	DESCRIPTION	MATERIAL			Q'ty
1	BODY	A216-WCB	A351-CF8M	A352-LCC	1
2	SEAT RETAINER	A216-WCB	A351-CF8M	A352-LCC	1
3	SEATS	PTFE+15%GF			2
4	BALL	A351-CF8M			1
5	STEM	A276-316			1
6	JOINT GASKET	GRAPHITE			1
7	GASKET	PTFE+15%GF			1
8	PACKING	GRAPHITE			1
9	GLAND RING	A276-304			1
10	BELLEVILLE SPRING WASHER	A240-301			2
11	LEVER NUT	A276-304			2
12	HANDLE	A240-304			1
13	PLASTIC COVER	VINYL			1
14	SOCKET HEAD SCREW	F593 304			1
15	SPACER	A276-304			1
16	STATIC DEVICE	A276-316			2
17	SPRING	A276-316			2
18	LOCKING TAB	A240-304			1
19	TAG	A240-304			1

SIZE	d	A	D2	D1	D	b	r	L	N-Φh	W	H	ISO5211
3/4"	15.8	22	42.9	82.6	115	14.3	2	152	4-19	140	83	F03

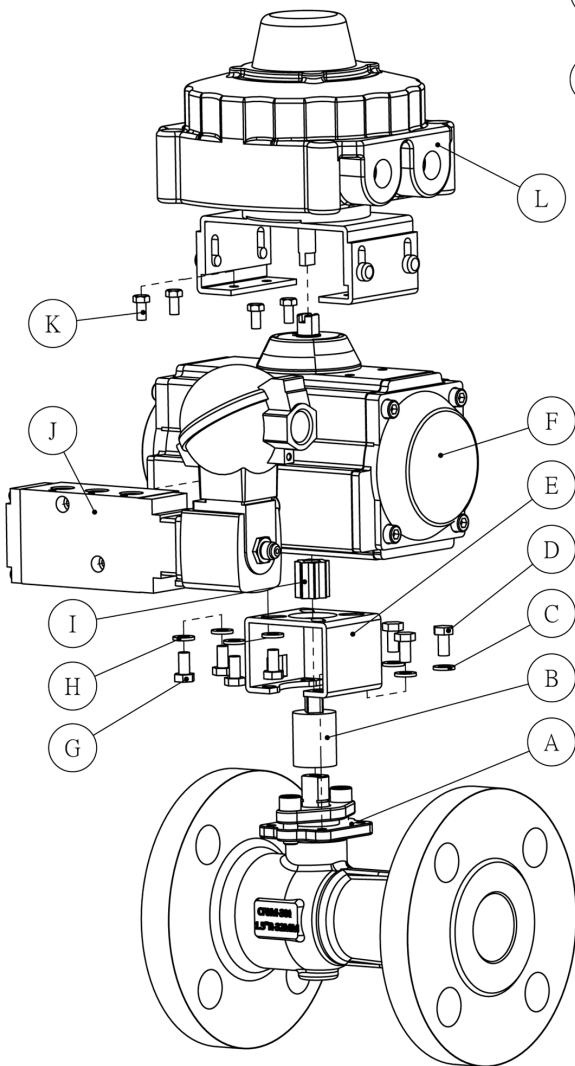
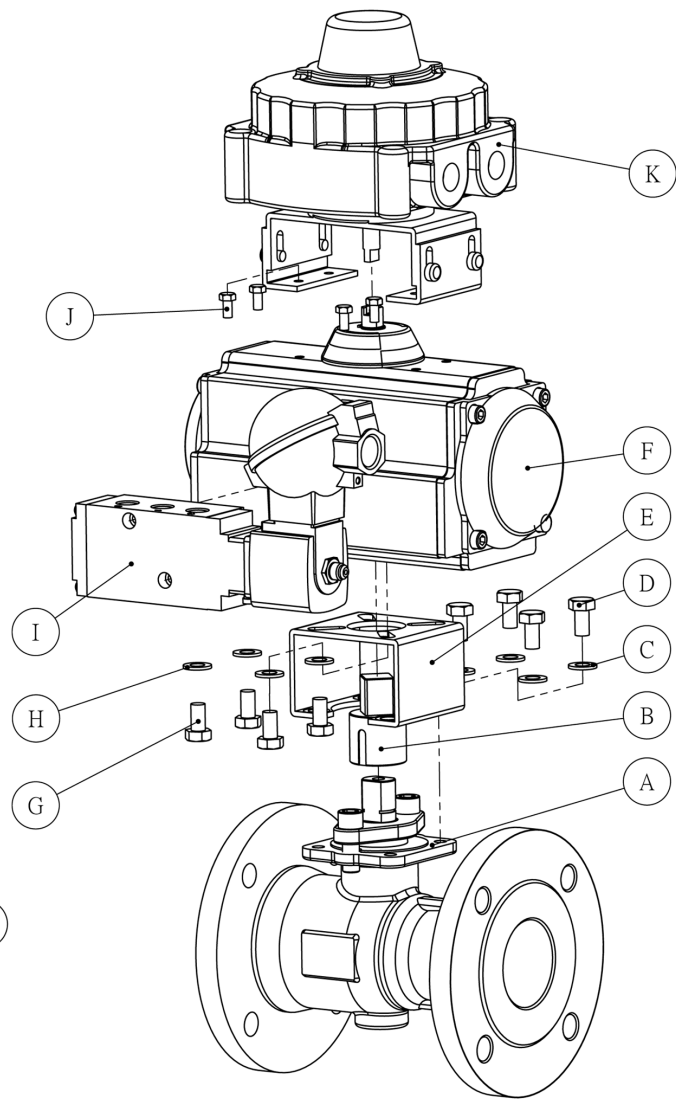


ITEM	PART NAME	MATERIAL	QTY
22	Spring	A276-316	2
21	Static Device	A276-316	2
20	Socket Screw	STEEL	1
19	Hexagonal Screw	SS304	1
18	Flat Washer	SS304	1
17	Handle	A216-WCB	1
16	Snap Ring	SS420	1
15	Stop Plate	SS304	1
14	Locking Plate	SS304	1
13	Sockethead Screw	SS304	2
12	Bracket	SS304	1
11	Sockethead Screw	SS304	2
10	Gland Flange	SS304	1
9	Stem Bearing	PTFE	1
8	Packing	GRAPHITE	1
7	Gasket	PTFE + 15% GF	1
6	Body Seal	GRAPHITE	1
5	Stem	A276-316 (4"&6"&8" 17-4PH)	1
4	Ball	A351-CF8M	1
3	Seat	PTFE + 15% GF	2
2	Set Retainer	A216-WCB A351-CF8M A352-LCC	1
1	Body	A216-WCB A351-CF8M A352-LCC	1

SIZE	a	A	B	C	D	E	F	G	HxN	I	L	M	P	Q	R	ISO5211
1"	20	25	50.8	88.9	125	135	38.5	15.9	19x4	2	165	12	50	8	48	F04
1-1/2"	32	38	73	98.4	155	160	50.6	19.1	22x4	2	190	15	50	10	48	F05
2"	38	50	92.1	127	165	230	60.5	20.7	19x8	2	216	19	70	14	68	F07
3"	58	80	127	168.3	210	350	89.9	27	22x8	2	282	24	102	16	96	F10
4"	76	100	157.2	200	255	350	108.7	30.2	22x8	2	305	24	102	16	96	F10
6"	111	150	215.9	269.9	320	400	160	35	22x12	2	403	30	102	20	92	F10
8"	144	200	269.9	330.2	380	800	182	39.7	25x12	2	419	38	125	26	115	F12

ITEM	PART NAME
A	BODY
B	ADAPTER
C	FLAT WASHER
D	HEX HEAD SCREW
E	BRACKET
F	ACTUATOR
G	HEX HEAD SCREW
H	FLAT WASHER
I	SOLENOID VALVE
J	HEX HEAD SCREW
K	LIMIT SWITCH

Exploded view of EA - 503 Actuated →



← Exploded view of EA - 507 Actuated

ITEM	PART NAME
A	BODY
B	ADAPTER
C	FLAT WASHER
D	HEX HEAD SCREW
E	BRACKET
F	ACTUATOR
G	HEX HEAD SCREW
H	FLAT WASHER
I	DRIVE SLEEVE
J	SOLENOID VALVE
K	HEX HEAD SCREW
L	LIMIT SWITCH

FEATURES

- Emico fire-safe uni-body flanged ball valves fitted with Spring Return pneumatic actuators.
- Valves have actuators sized for full rated line pressure (Class150 / Class 300) and based on 550 kPa air supply.
- Actuators sized for 500 kPa & 600 kPa also available.
- Mounting brackets and drive couplings manufactured in stainless steel.
- Valve/actuator mounting can be easily removed for gland packing adjustment.
- Drive couplings have stainless steel fold-down locking tabs to secure gland nut against loosening.
- EMICO valves have ISO 5211 mounting pads for actuation.
- Actuators have Namur-standard air connections and accessory mounts. Also available for piped connections.
- "Bolt-on" accessories include solenoid valve & limit switch.

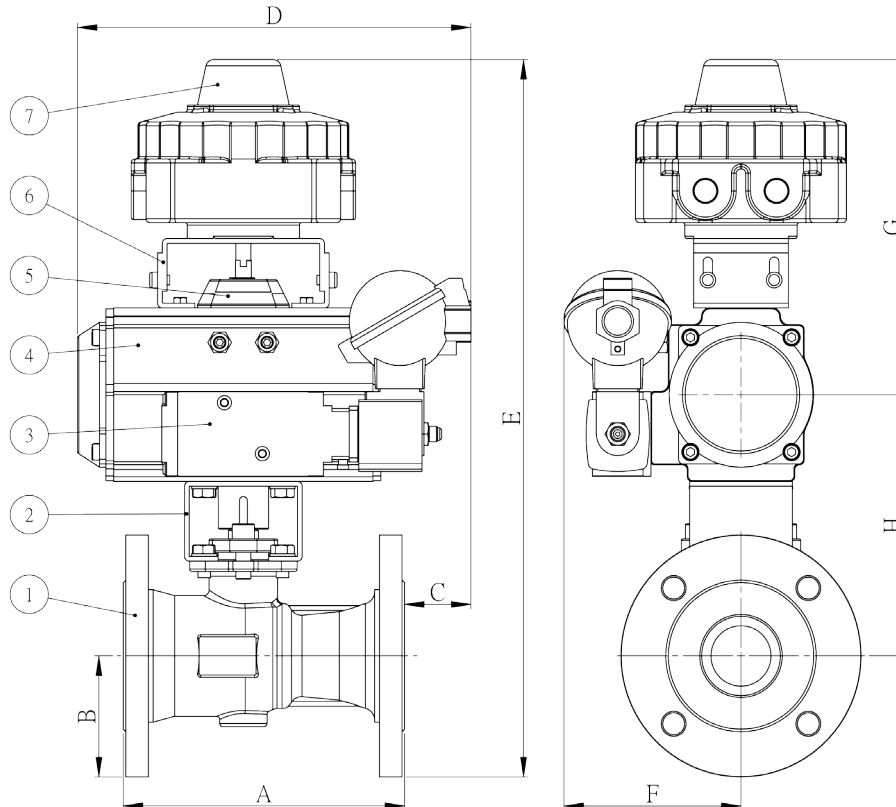


TORQUE DETAILS

Valve Size (mm)	EMICO Fig. No.	Valve Nett Break Torque	Valve Size (mm)	EMICO Fig. No.	Valve Nett Break Torque
15	EA - 503		15	EA - 507	
20	EA - 503	3.14 Nm	20	EA - 507	4.28 Nm
25	EA - 503	7.42 Nm	25	EA - 507	9.5 Nm
40	EA - 503	15.83 Nm	40	EA - 507	17.67 Nm
50	EA - 503	27.38 Nm	50	EA - 507	30.77 Nm
65	EA - 503	39 Nm			
80	EA - 503	48.75 Nm	80	EA - 507	57.37 Nm
100	EA - 503	73.14 Nm	100	EA - 507	114.03 Nm
150	EA - 503	182.88 Nm	150	EA - 507	222.32 Nm
200	EA - 503	307.78 Nm	200	EA - 507	360.06 Nm

REFER TO EMICO TECHNICAL BULLETIN NO. 8591- 04/18 29TH MAY 2017
FOR AGA AUTOMATIC SHUT-OFF & VENT VALVE CLASS 1 DETAILS

Item	Description	Material
1	EMICO Ball Valve, Uni-Body, Reduced Bore Flanged	CS WCB, SS CF8M, Other
2	Mounting Bracket (Valve / Actuator)	S/S to 50mm, Plated M/S above
3	3/2 Way Solenoid Valve	Polyamide, Aluminium, Stainless Steel
4	EMICO Spring Return Pneumatic Actuator	Al. Alloy
5	Visual Position Indicator	ABS
6	Mounting Bracket (Limit Switch / Actuator)	Steel (Powder Coated)
7	Limit Switch	Al. Alloy

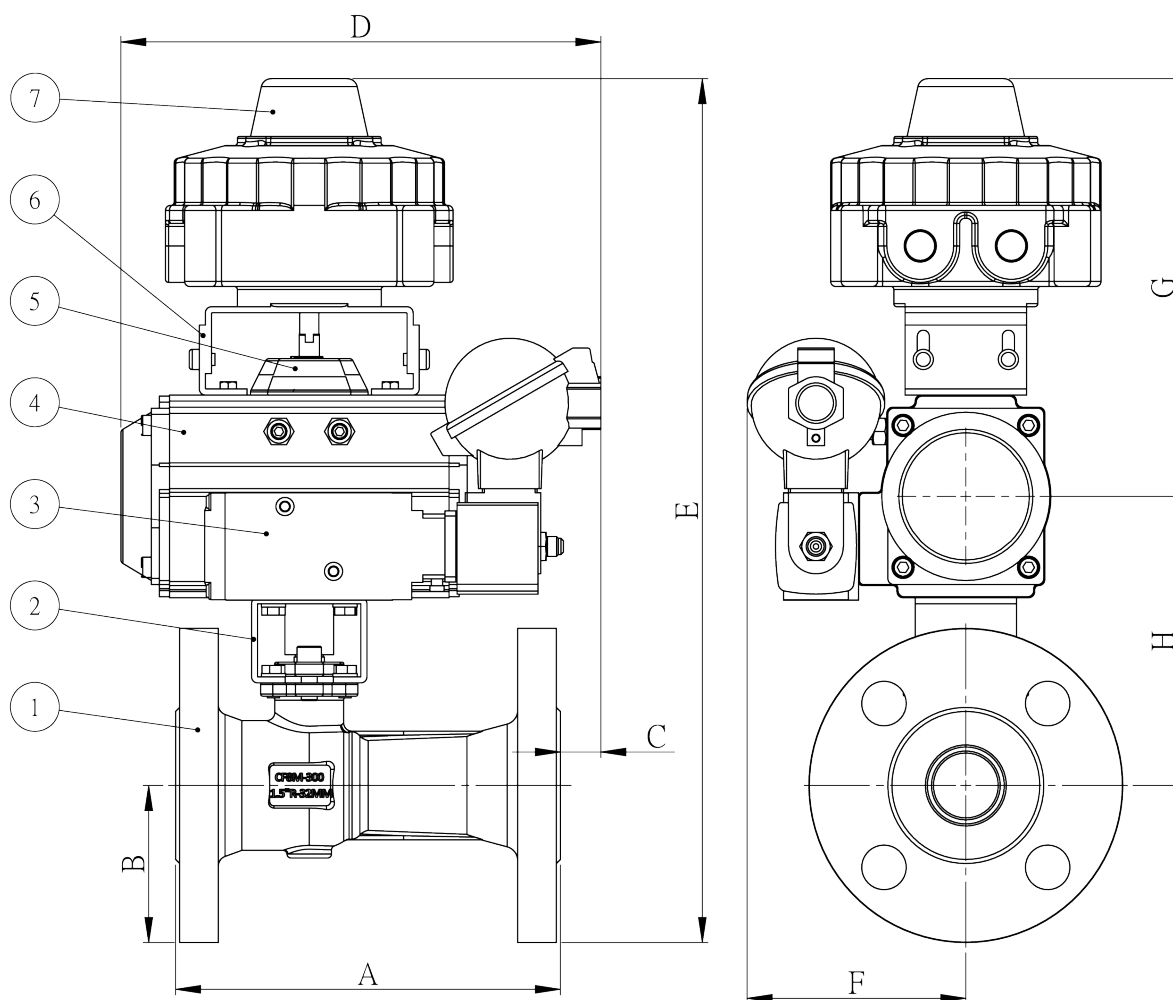


EMICO BALL VALVE (REDUCED BORE)		SPR RTN ACTUATOR	SOL VALVE	LIMIT SWITCH	DIMENSIONS (mm)							
PART NO.	SIZE (mm)	EMICO PART NO.	(BURKERT/POWER-GENEX)		A	B	C	D	E	F	G	H
EA-503 Class 150	20	EA-SR52/10	TYPE 6519/ TYPE 6518/ ESV-S	ALS-400M2/ ALS-500M2/ ALS-200M2/ LSB-3000	117	50	73.8	217	354.9	96.5	192.1	103.8
	25	EA-SR63/11			127	54	85.4	228	361.6	96.5	192.1	115.5
	40	EA-SR75/11			165	63.5	45	237	411.2	108	206.1	141.6
	50	EA-SR92/10			178	76	42	249	450.6	112	210.6	164.1
	65	EA-SR92/11			190	90	35	276	479.5	182.9	214.6	174.9
	80	EA-SR105/10			203	95	33.2	280	543	187.7	222.3	225.4
	100	EA-SR125/10			229	114.5	18.6	302	603.3	198.2	233.6	255.2
	150	EA-SR160/11	TYPE 6518	267	139.5	95.6	458	701.6	210.7	254.6	307.5	
	200	EA-SR190/10										

*Note: Quick Exhaust Valve (QEV) included where applicable

*Note: Actuator default sizing based on 5.5 bar (80psi)

EMICO BALL VALVE (FULL BORE)		SPR RTN ACTUATOR	SOL VALVE	LIMIT SWITCH	DIMENSIONS (mm)							
PART NO.	SIZE (mm)	EMICO PART NO.	(BURKERT/POWER-GENEX)		A	B	C	D	E	F	G	H
					EA-507 Class 300	20	EA-SR52/10	TYPE 6519/ TYPE 6518/ ESV-S	ALS-400M2/ ALS-500M2/ ALS-200M2/ LSB-3000	152	57.5	50.8
25	EA-SR63/11	165	62.5	85.4		228	387.1			170.7	200.1	124.5
40	EA-SR83/10	190	77.5	20		237	426.2			108	206.1	142.6
50	EA-SR92/10	215.9	82.5	18.6		276	466.1			182.9	214.6	169.1
80	EA-SR125/10	TYPE 6518	282.4	105		20.4	280	554		187.7	222.6	226.4
100	EA-SR140/10		305	127.5		15.4	398	634.3		200.7	242.1	264.7
150	EA-SR160/11		403	160		95.4	458	743.1		210.7	254.6	328.5
200	EA-SR210/11											



*Note: Quick Exhaust Valve (QEV) included where applicable

*Note: Actuator default sizing based on 5.5 bar (80psi)



Australia:

RAZVALVE PACIFIC PTY LTD

Office & Warehouse:

13/28 Enterprise Drive,
Rowville, Victoria 3178, Australia

Ph: 61 (03) 9764 1149
Email: sales@razvalve.com

Website: www.razvalve.com
www.emicovalves.com

Taiwan:

EAYUAN METAL INDUSTRIAL CO. LTD. (EMICO)

Office:

16F-8, No. 386, Shizheng Rd., Xitun Dist.
Taichung City 407, Taiwan

Ph: 886-4-2259 1616

